

**TEKNİK EĞİTİM FAKÜLTESİ  
ANKARA BÜYÜKŞEHİR BELEDİYESİ**

**BELTEK MESLEK EDİNDİRME KURSU**

**MAKİNA EĞİTİMİ BÖLÜMÜ**

**703 CAD I**

**BİLGİSAYAR DESTEKLİ ÇİZİM (2 BOYUT) KURSU**

# **UYGULAMA ÖRNEKLERİ**

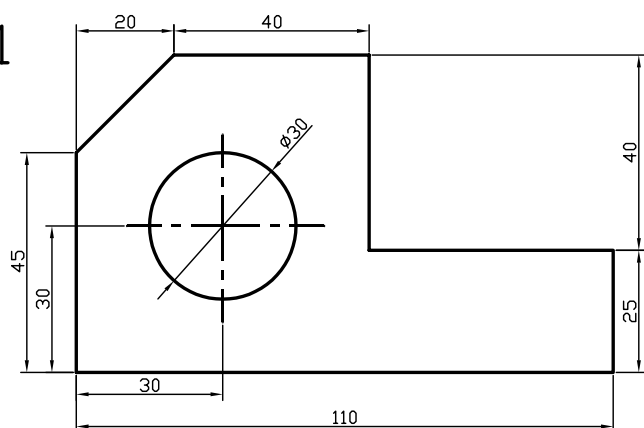
**ÖĞRETİM ELEMANLARI**

**Prof. Dr. Ulvi ŞEKER**

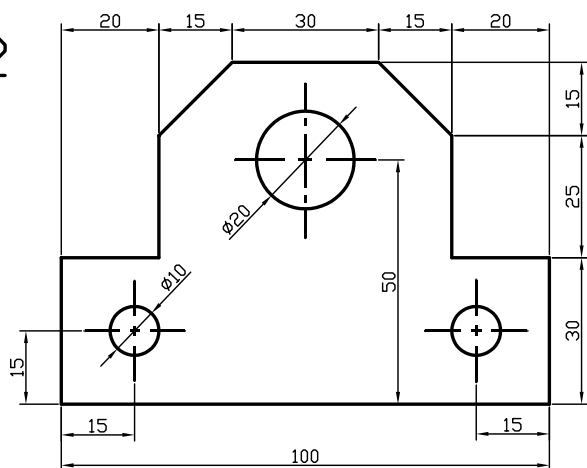
**Arş. Gör Abdullah KURT**

**2005**

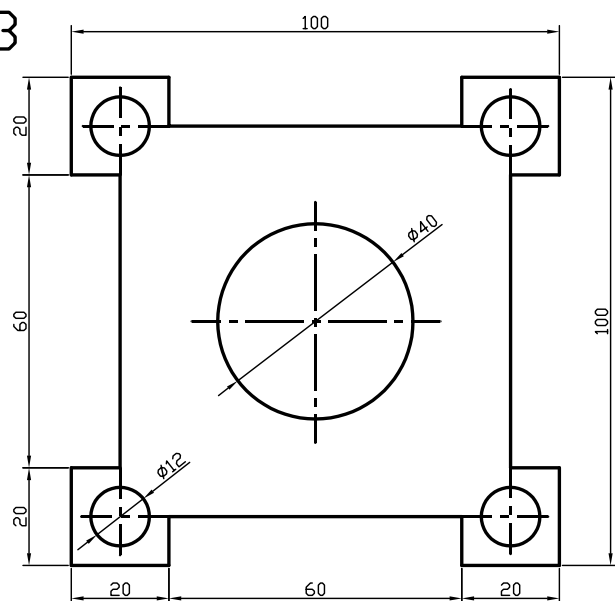
1



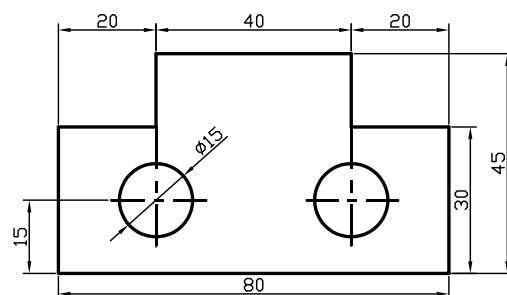
2



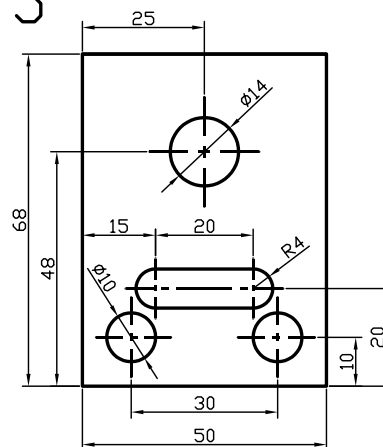
3



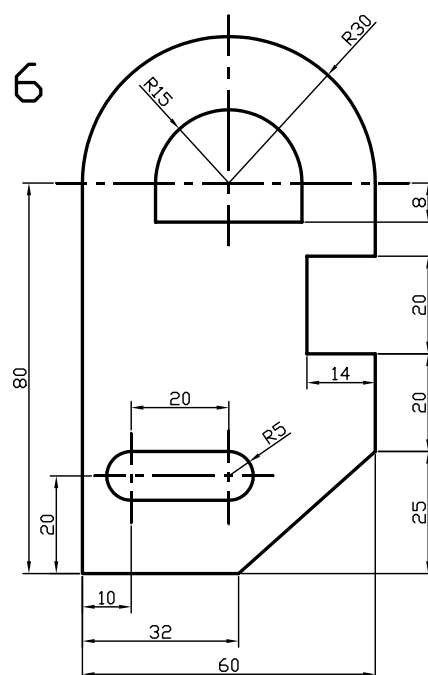
4



5



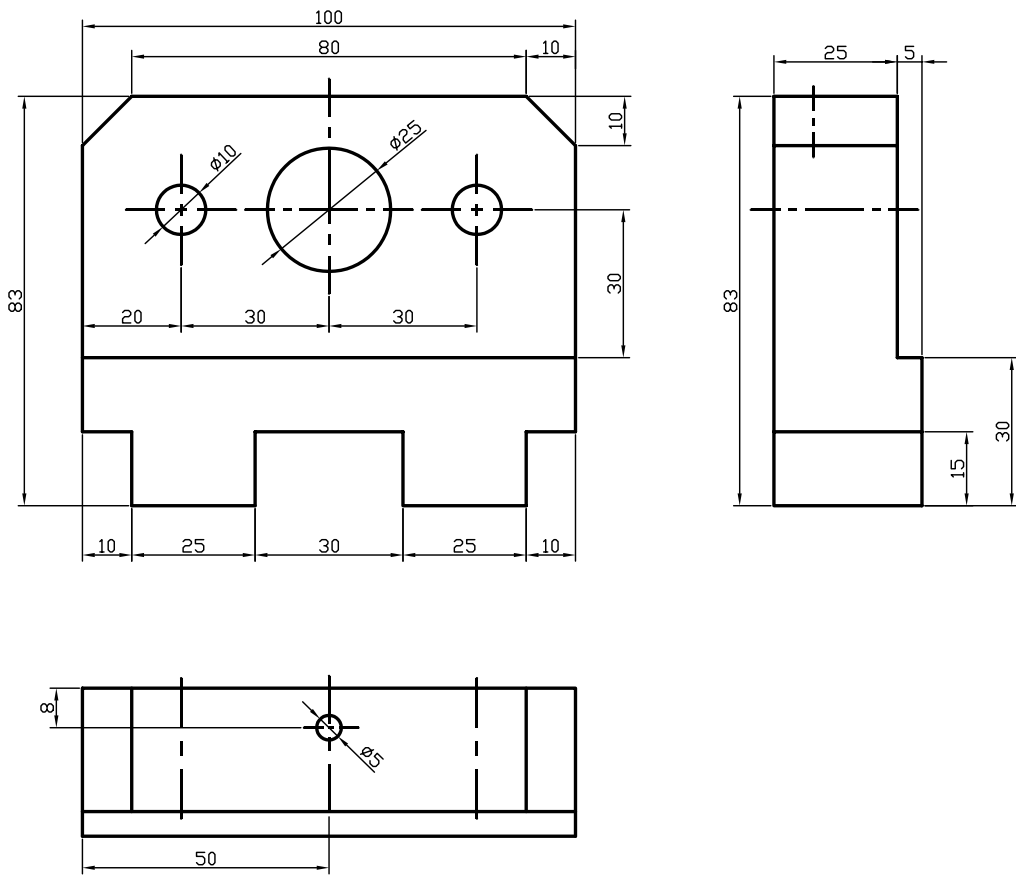
6



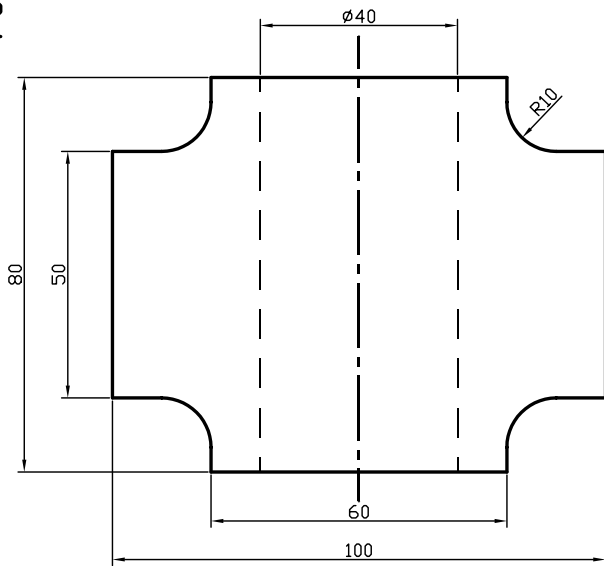
1



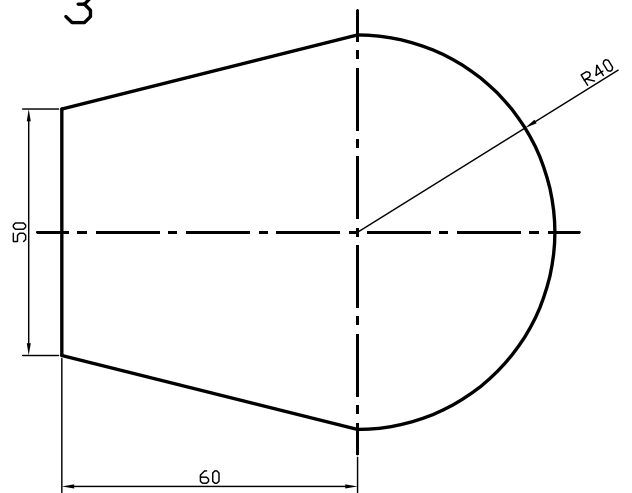
1



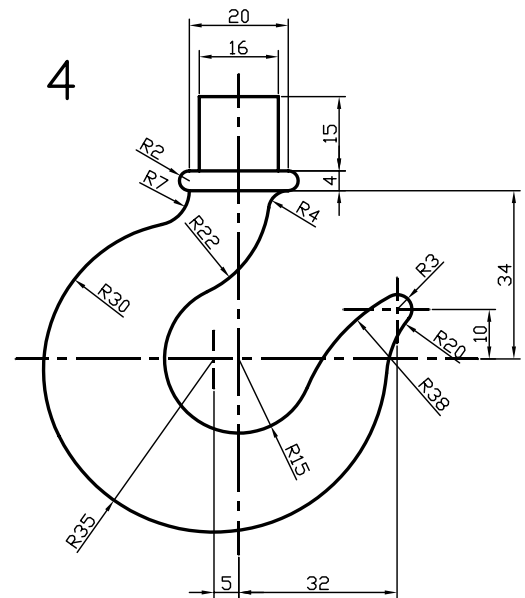
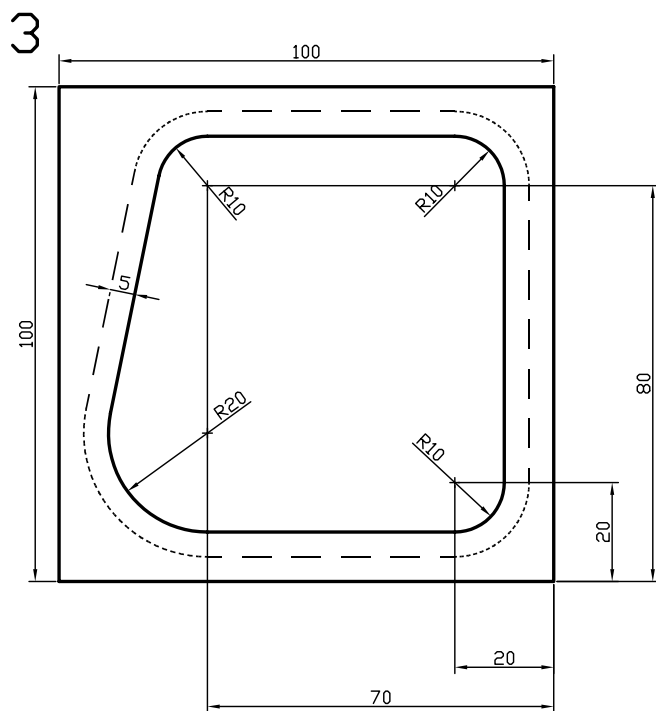
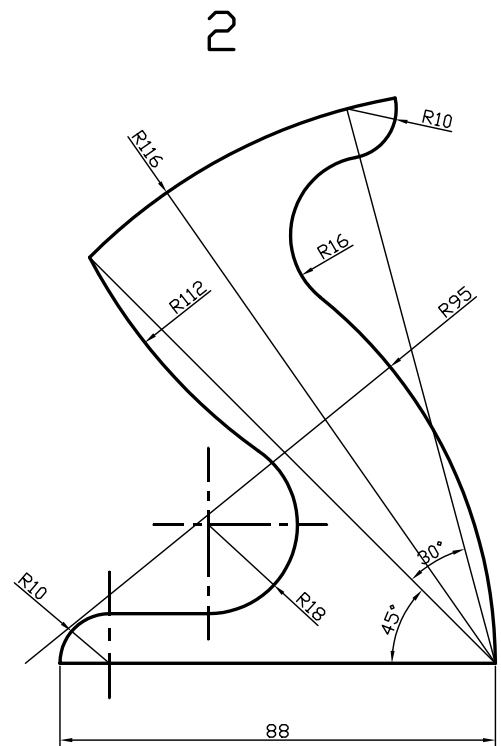
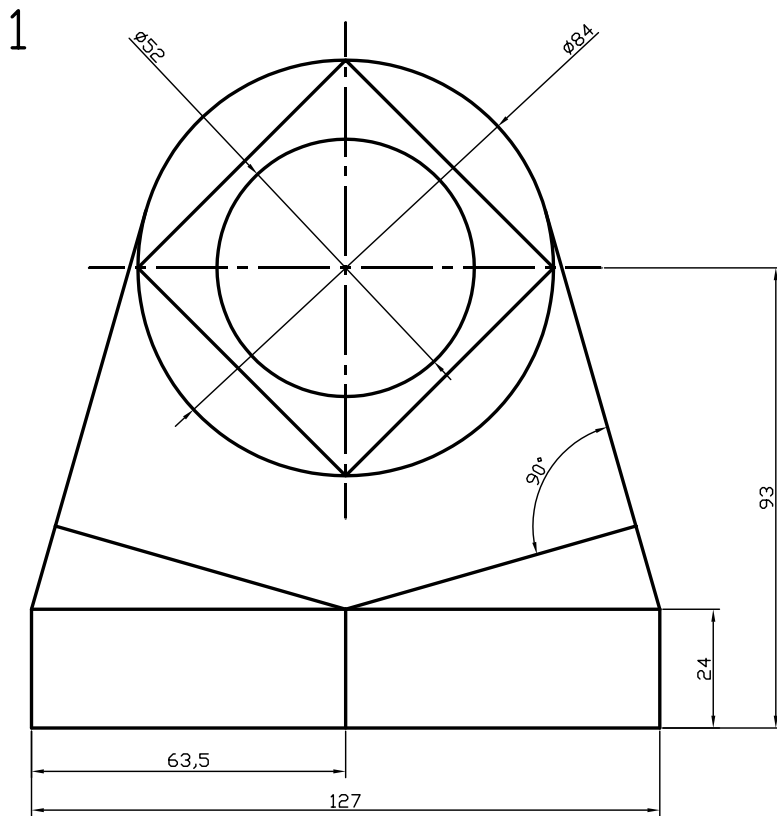
2

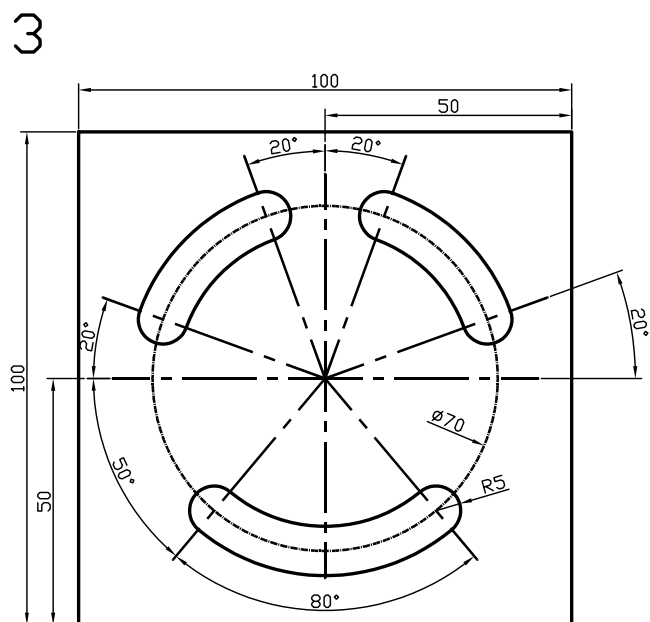
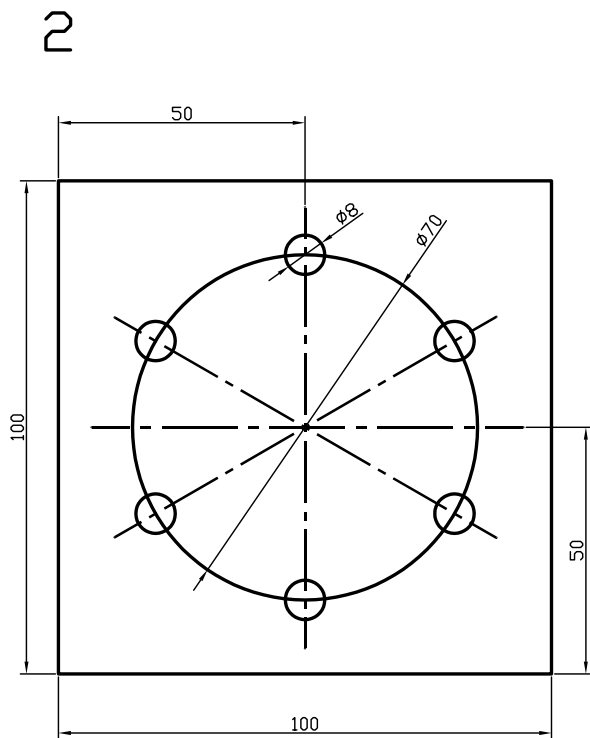
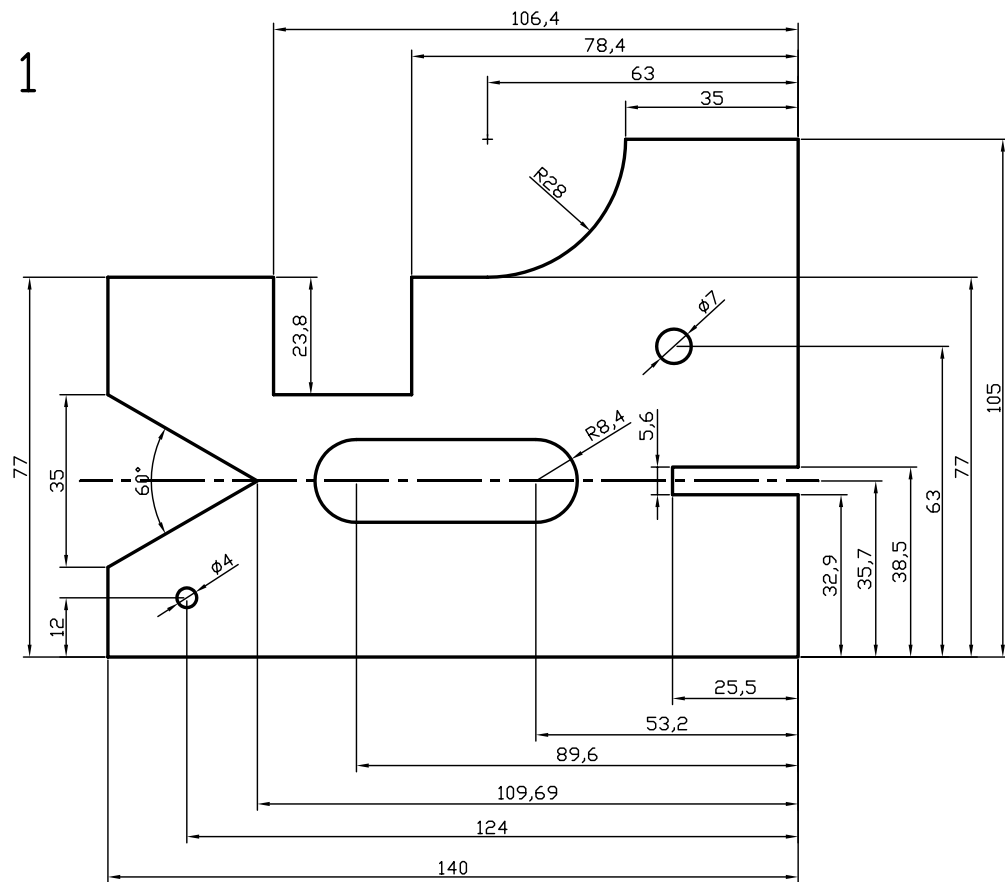


3

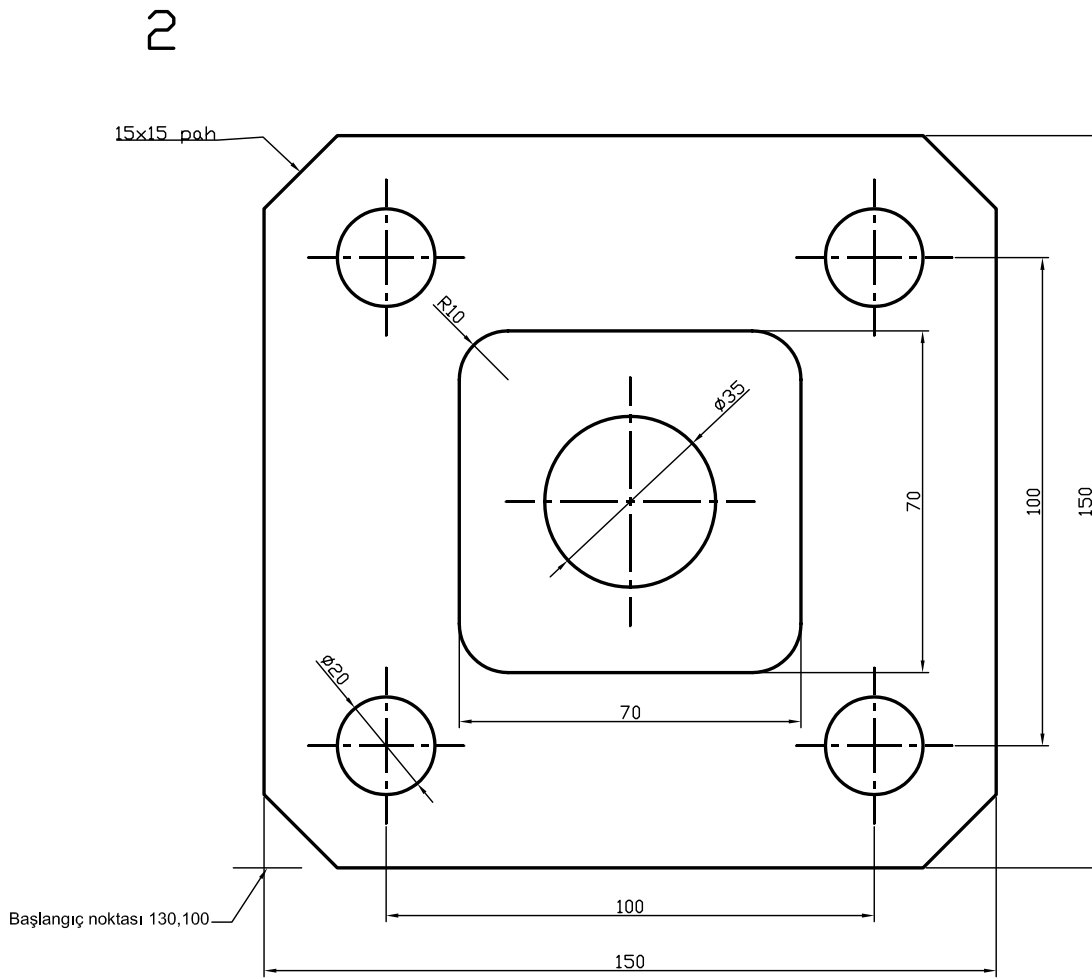
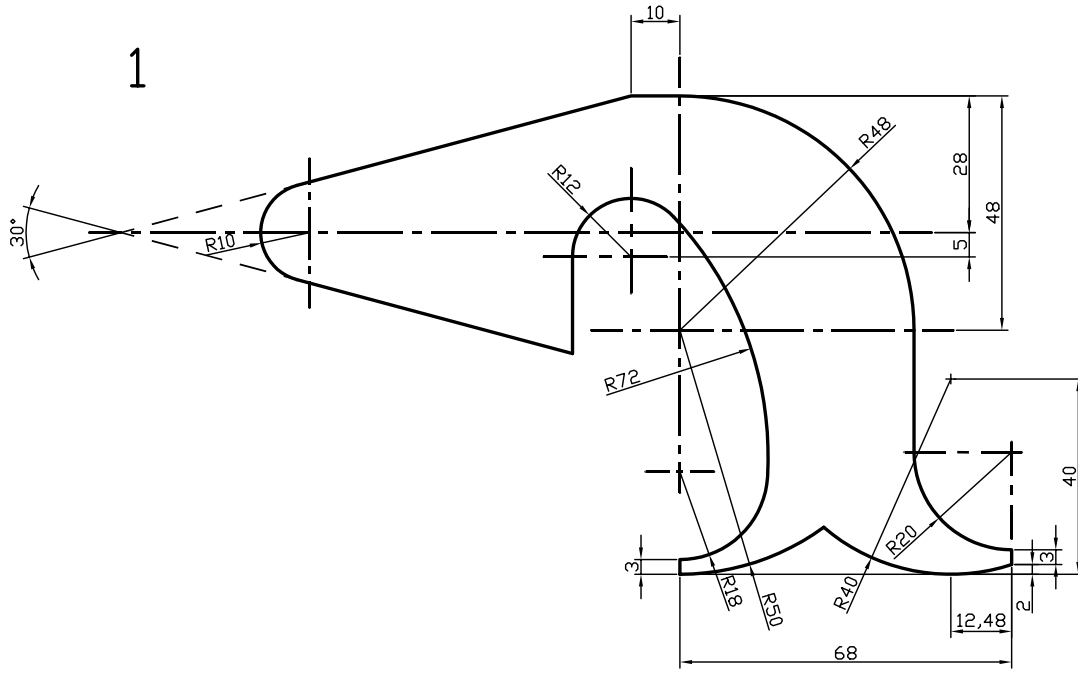


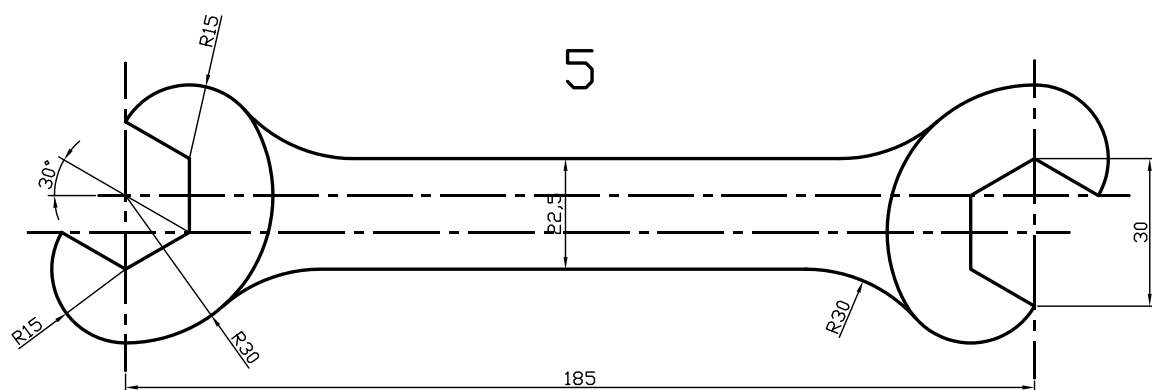
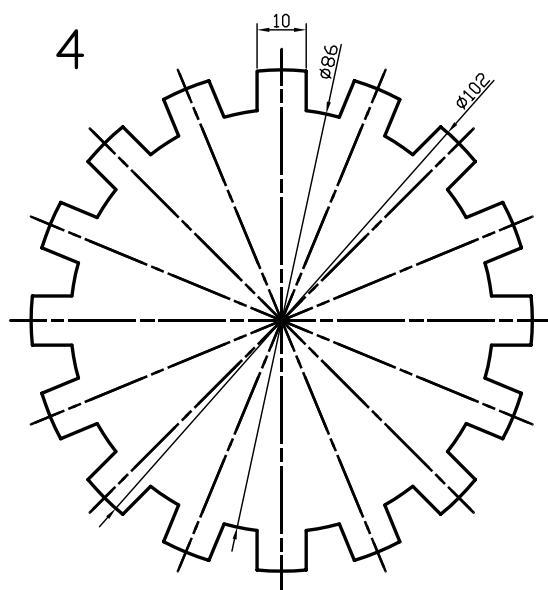
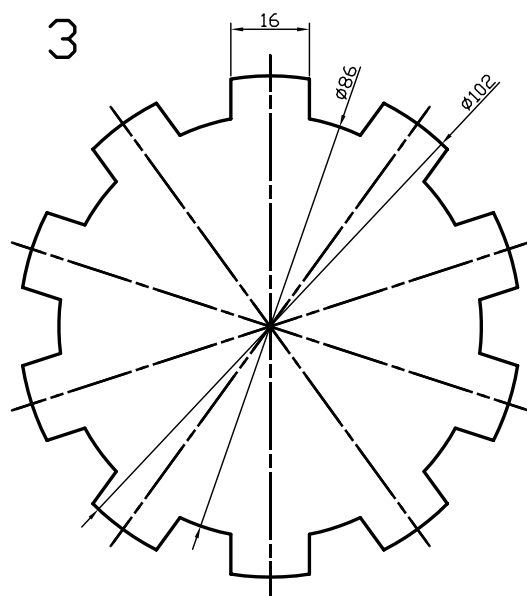
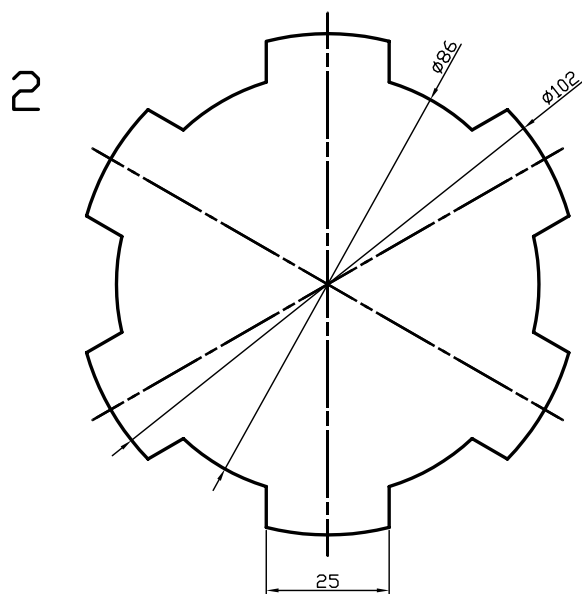
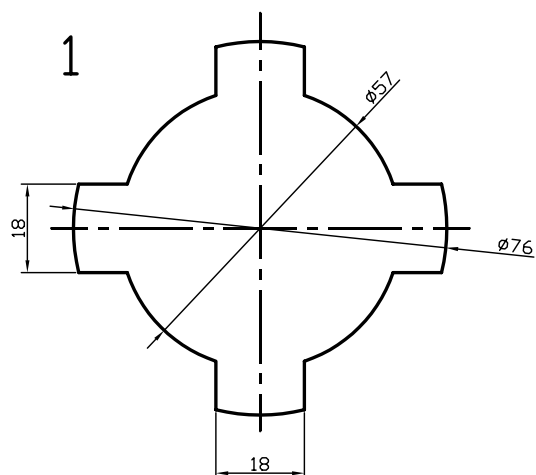
3



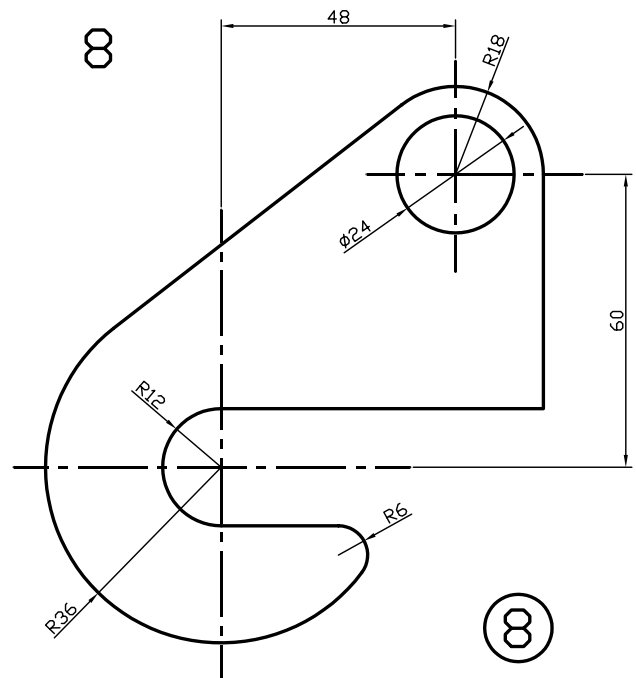
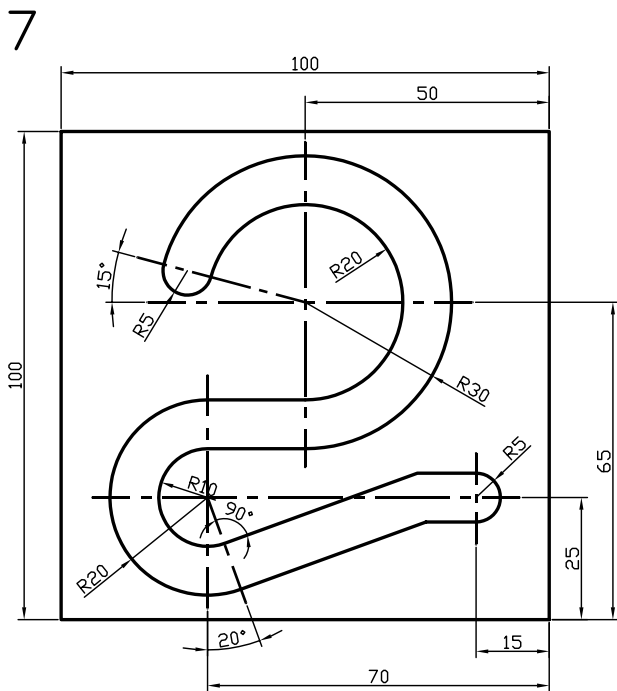
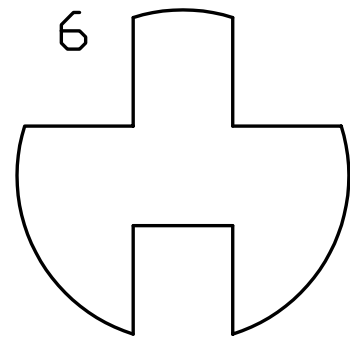
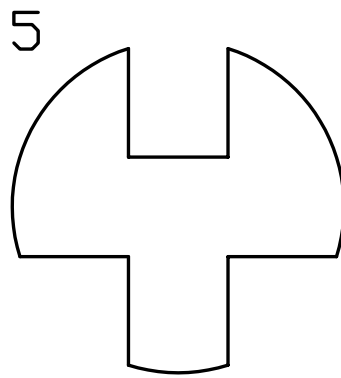
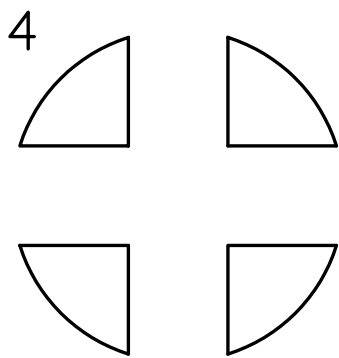
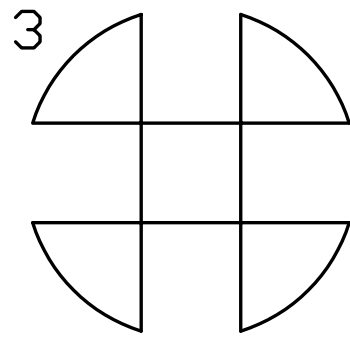
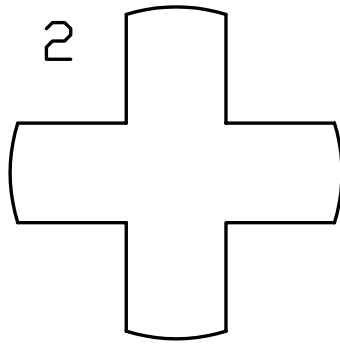
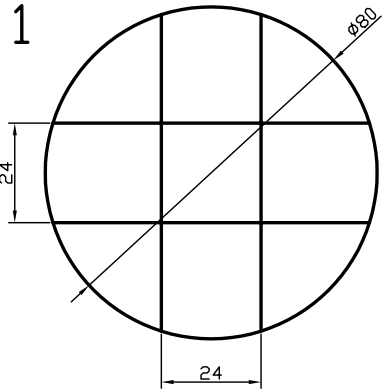


5

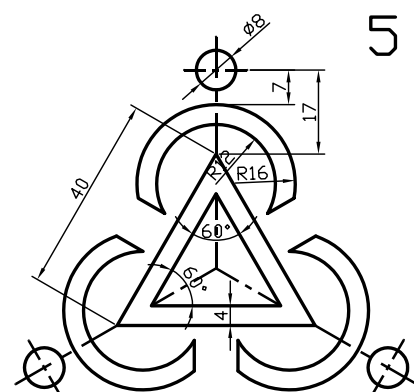
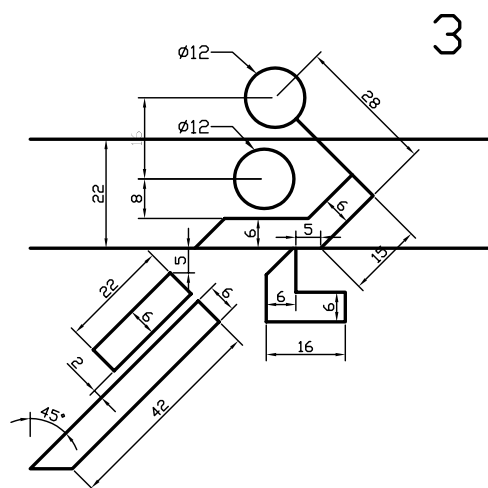
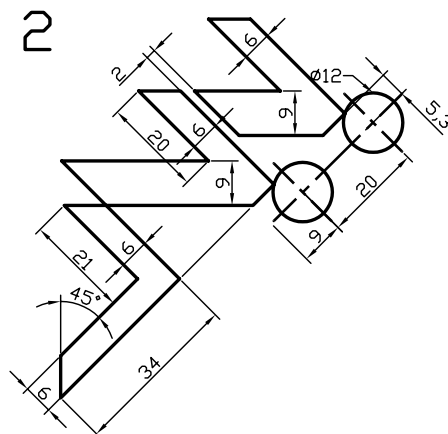
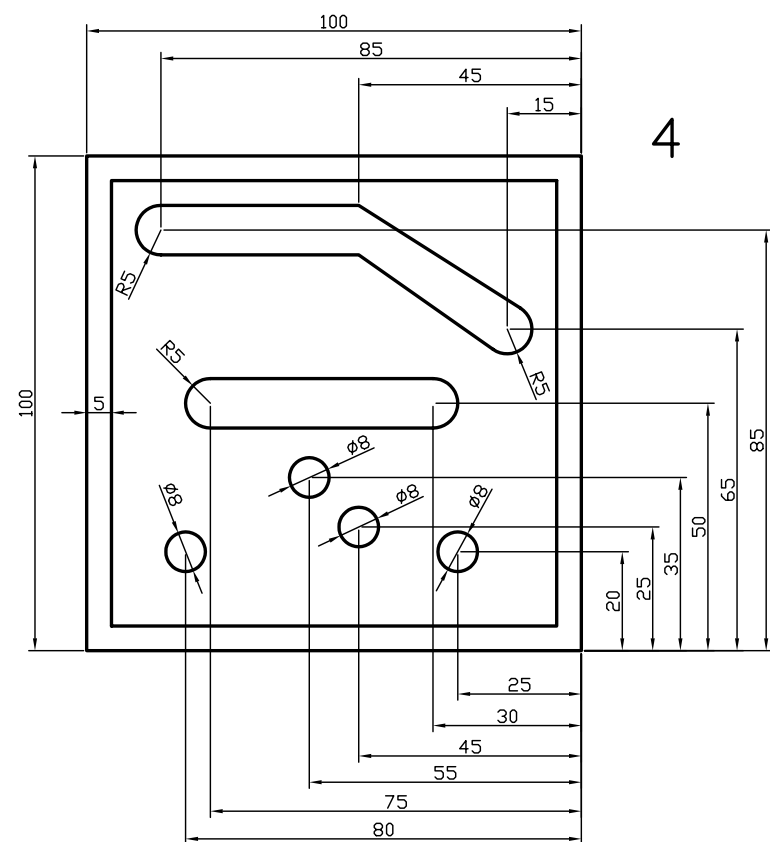
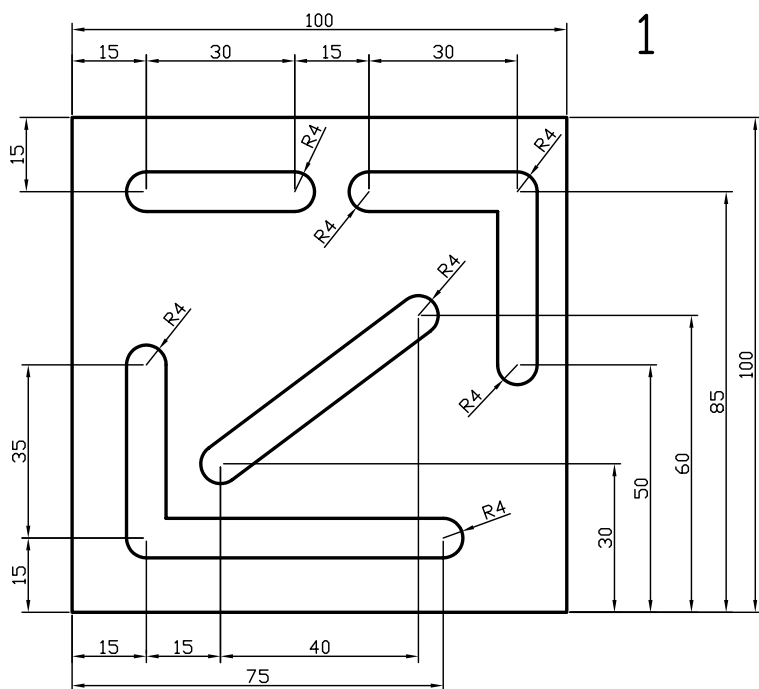


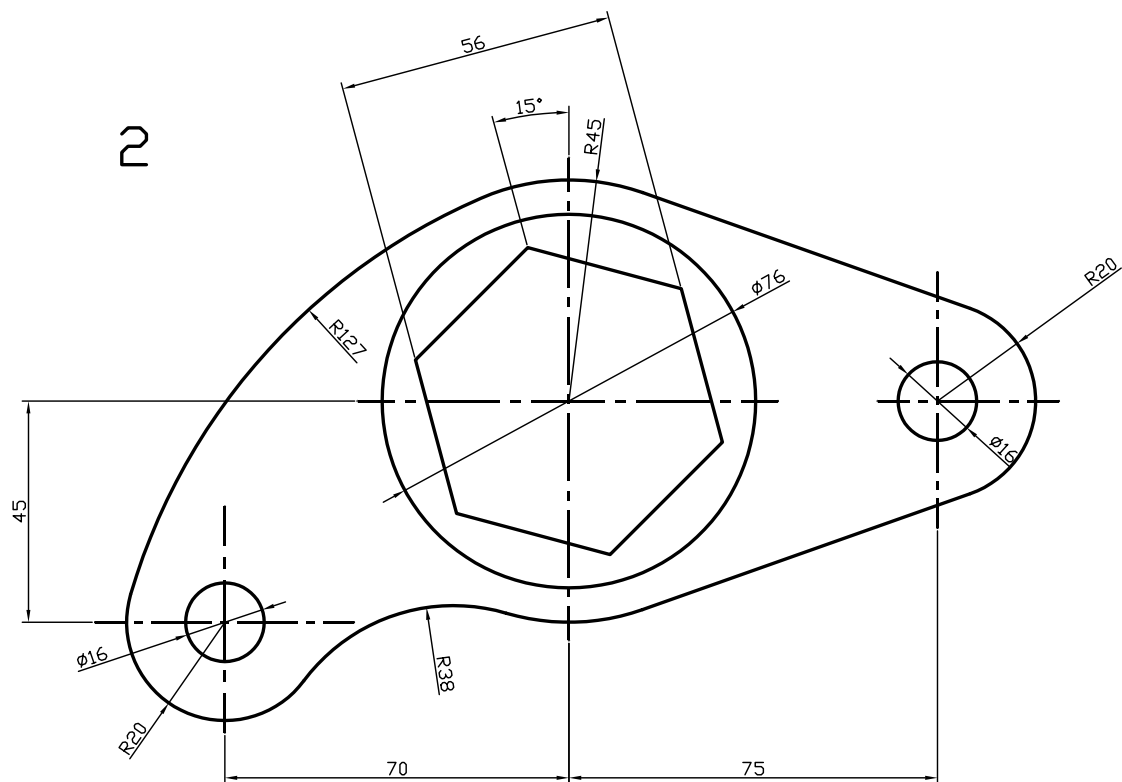
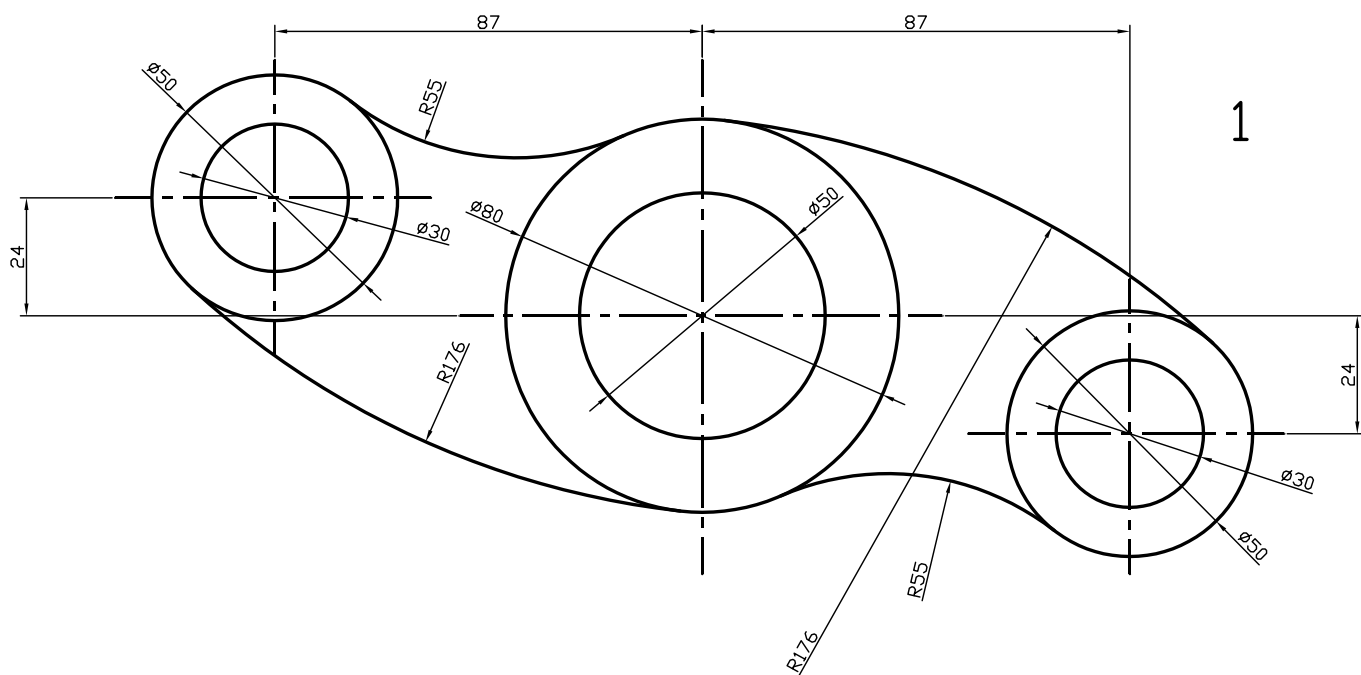








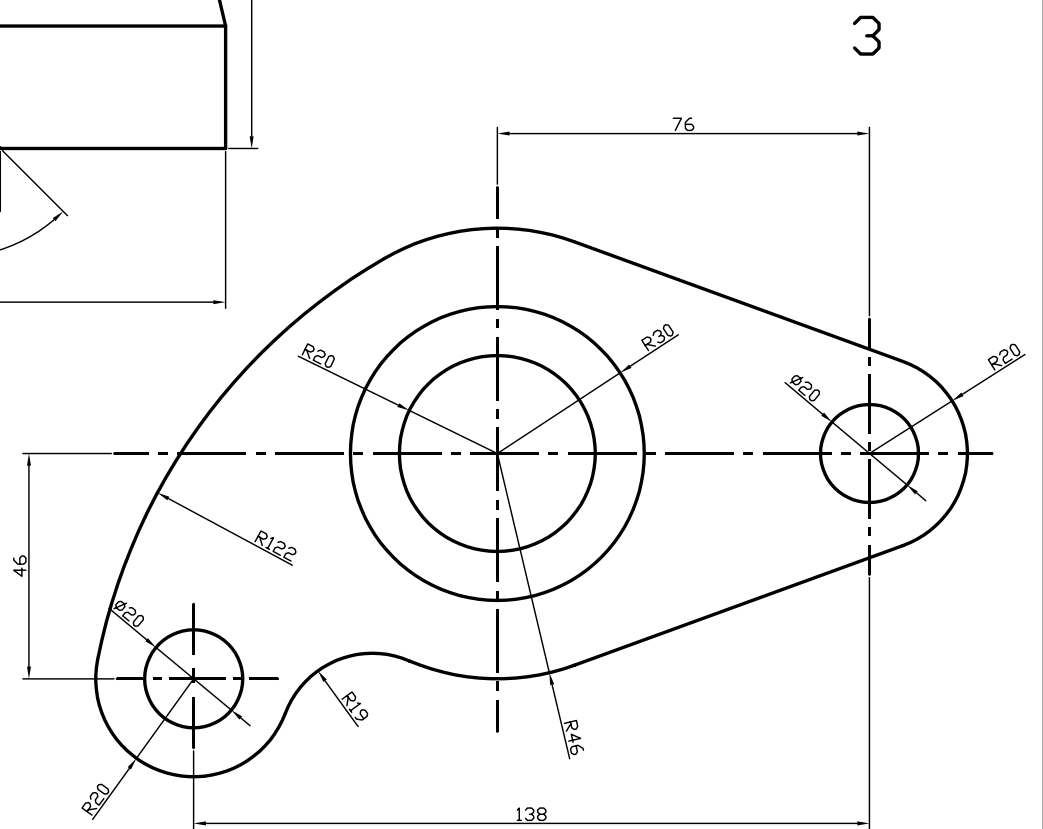
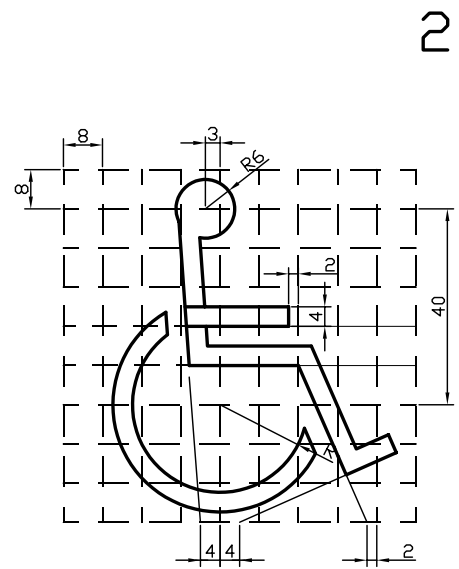
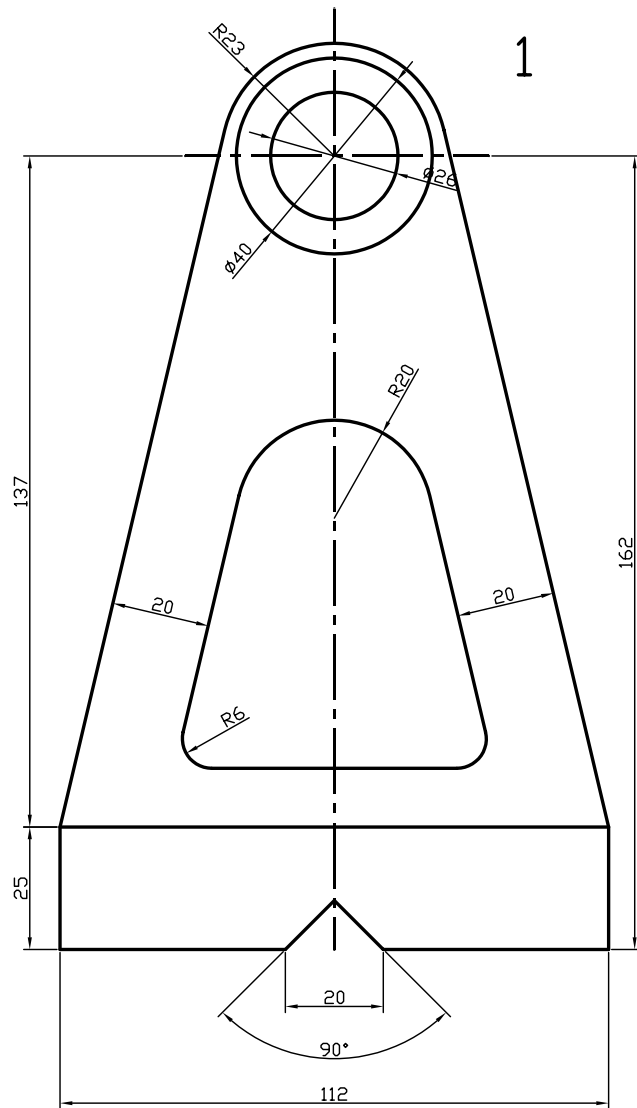




11

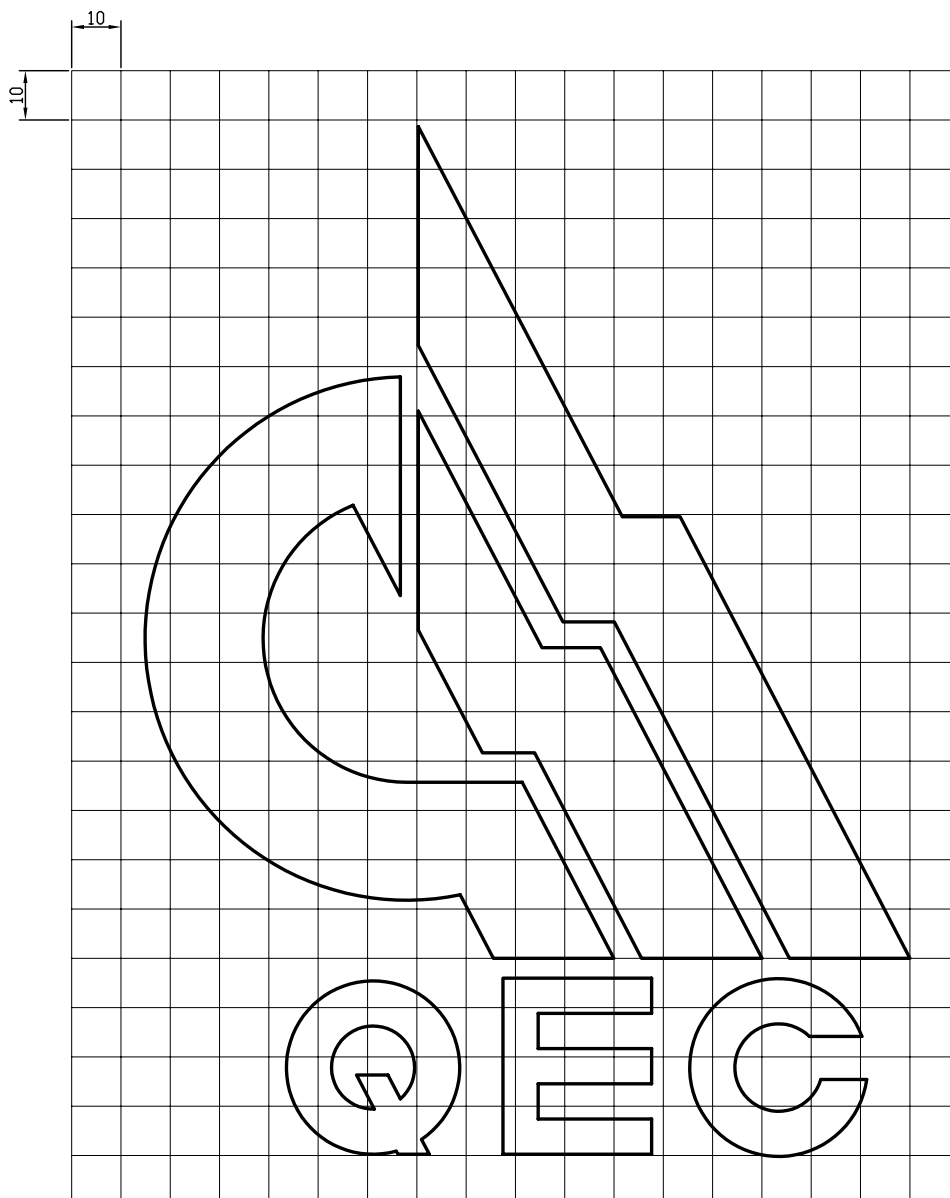




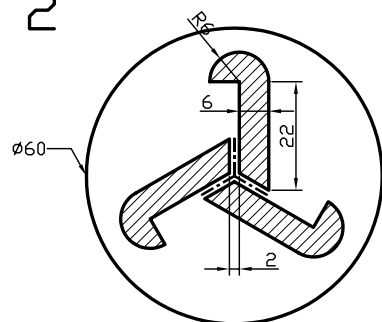


14

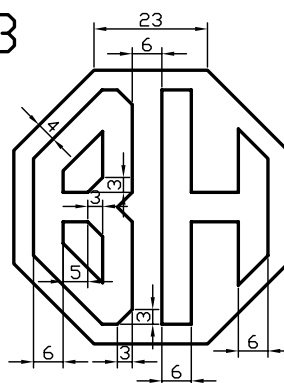
1



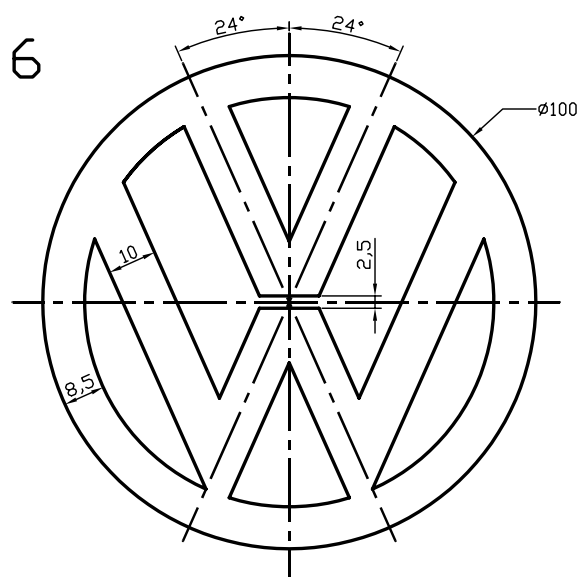
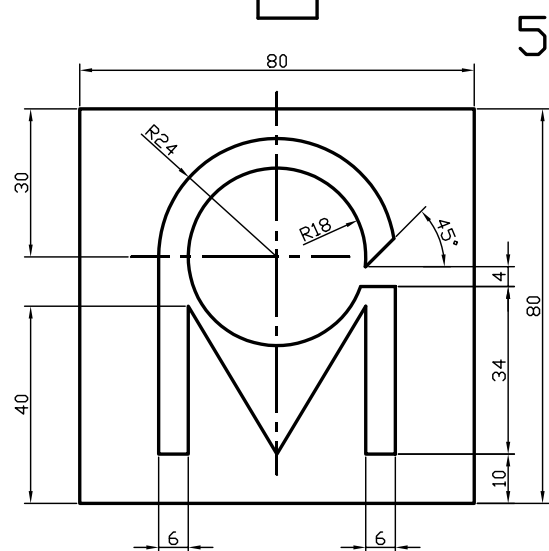
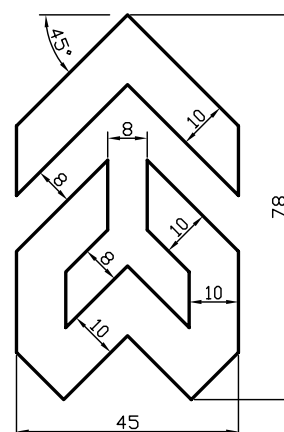
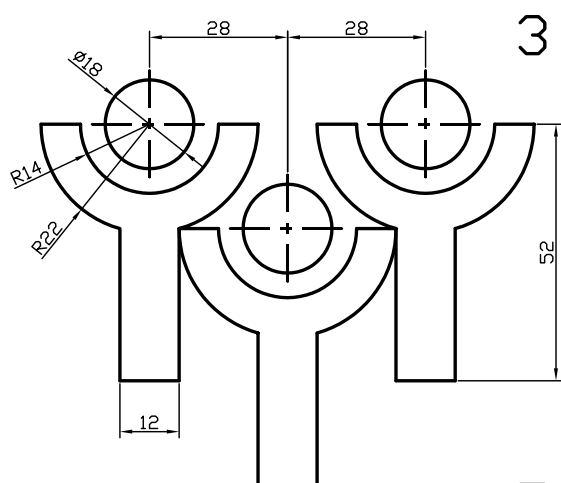
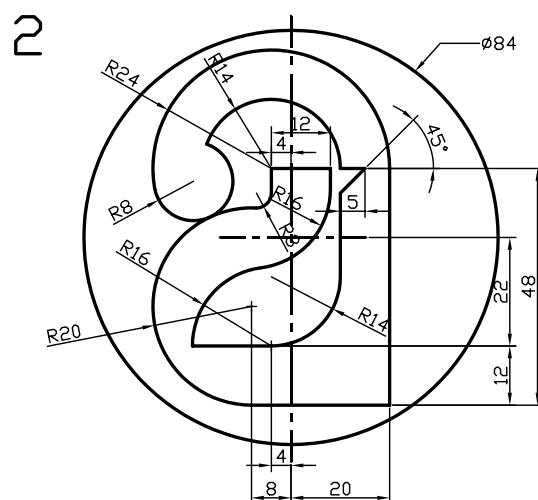
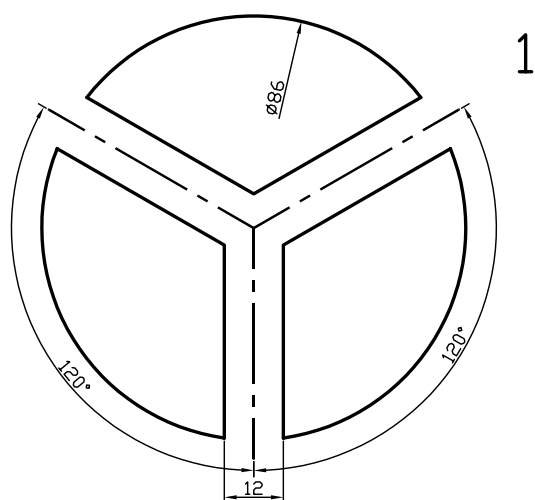
2

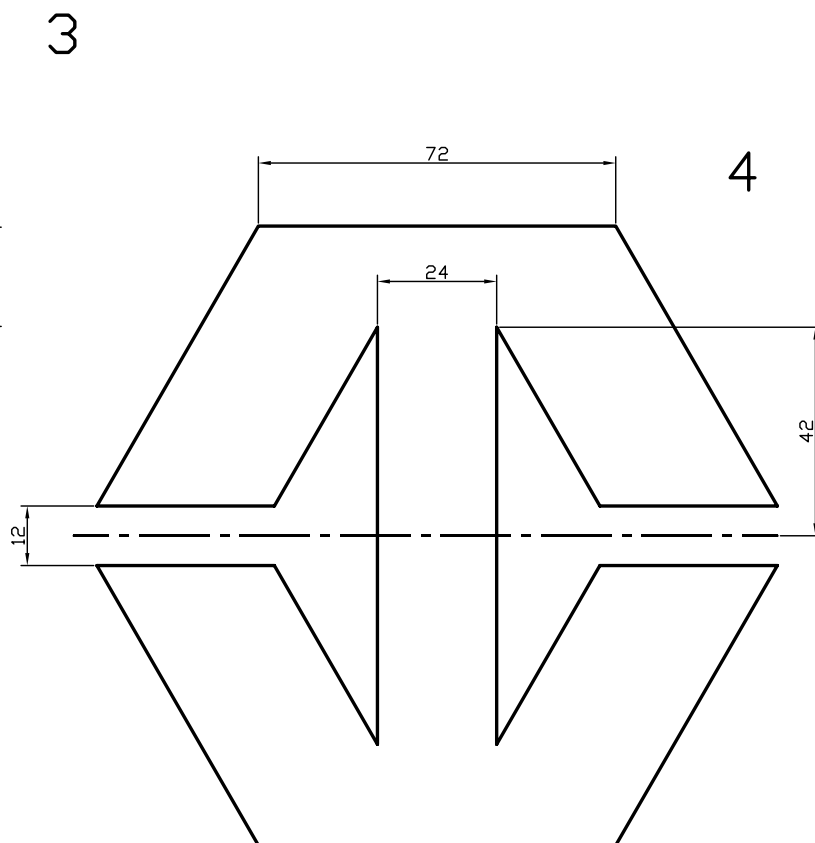
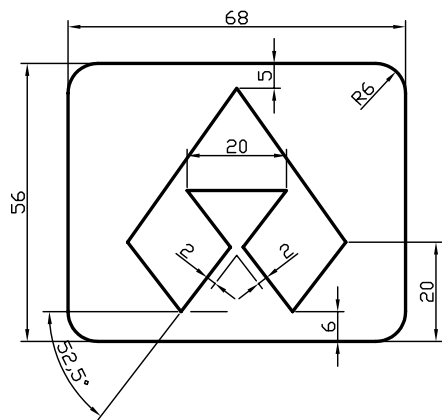
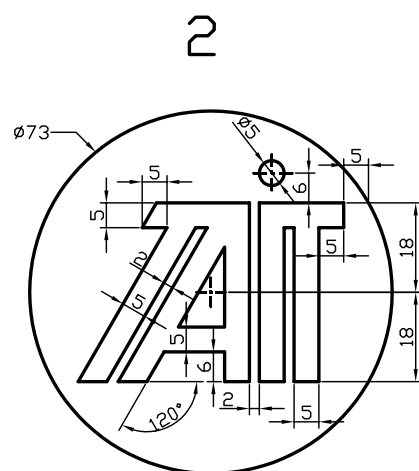
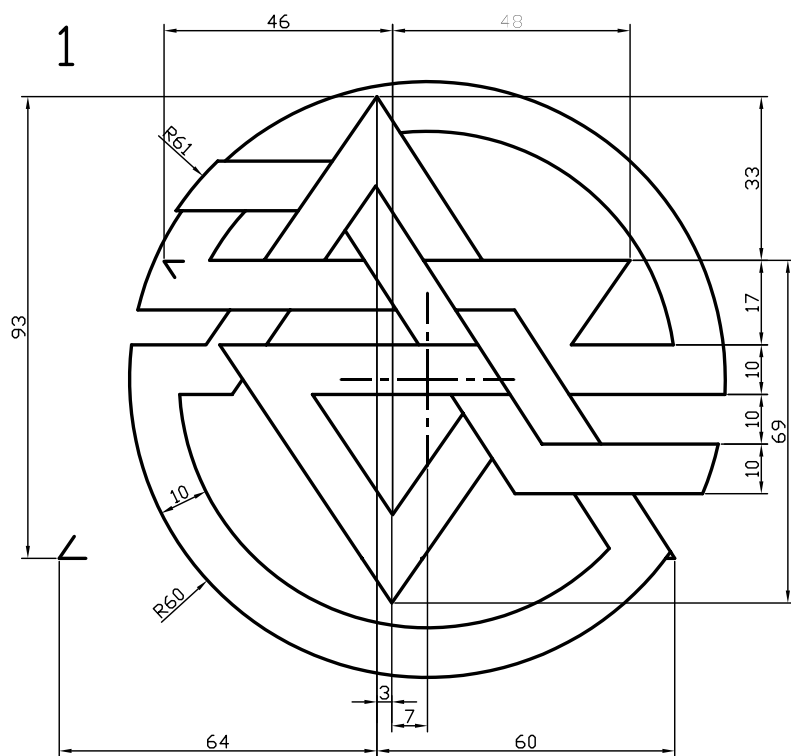


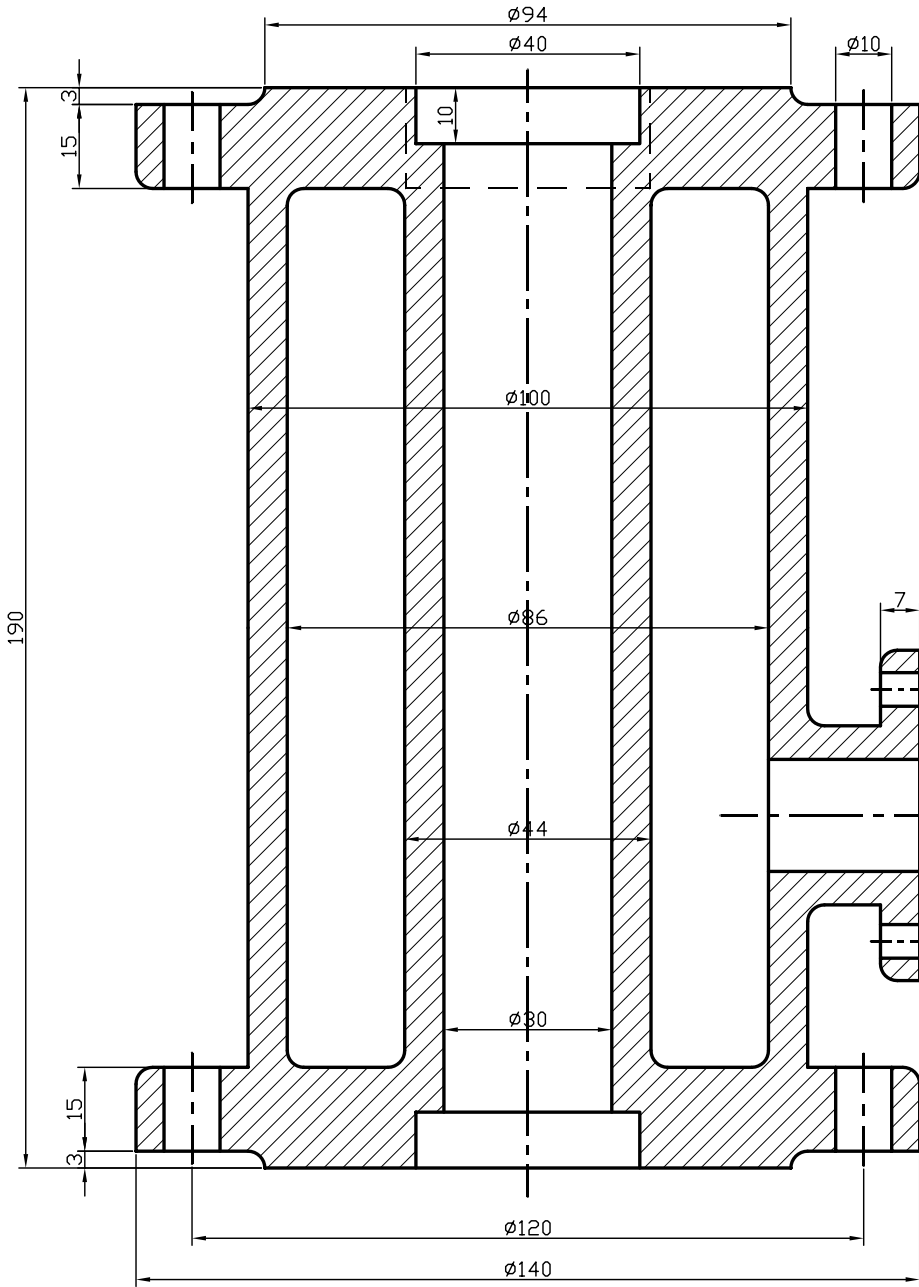
3



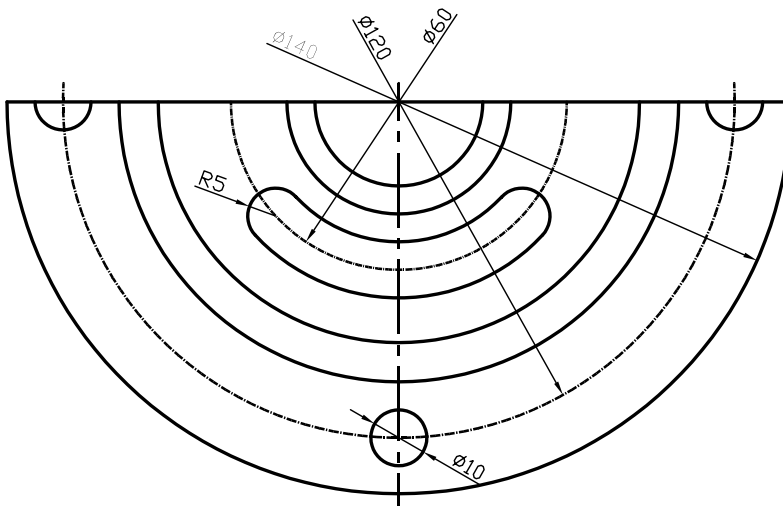
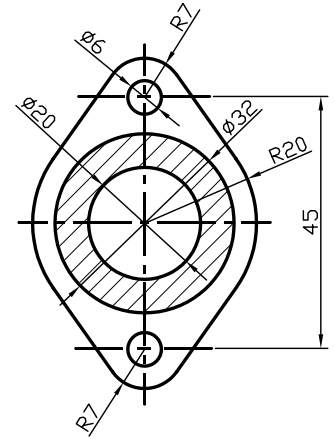


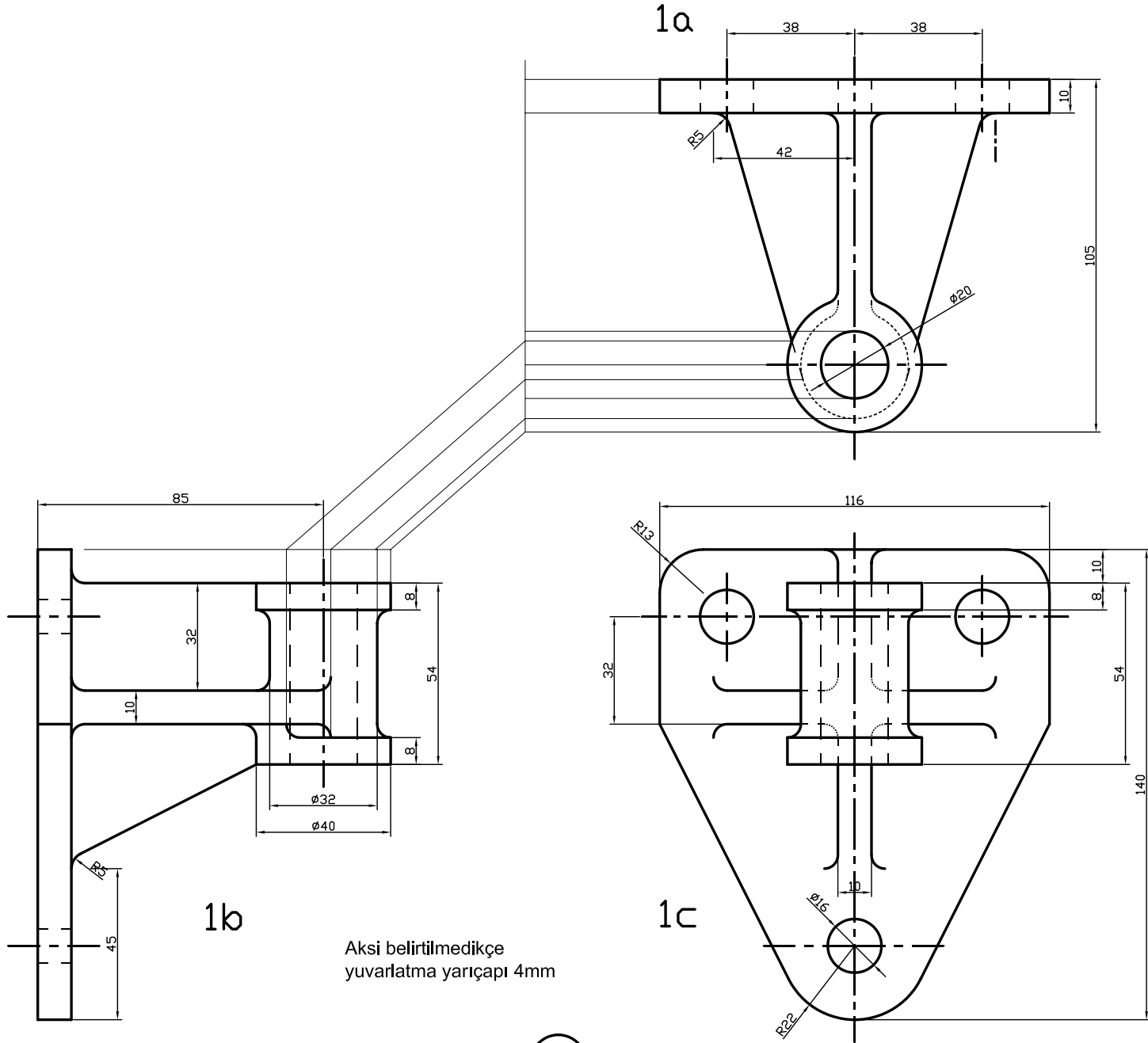


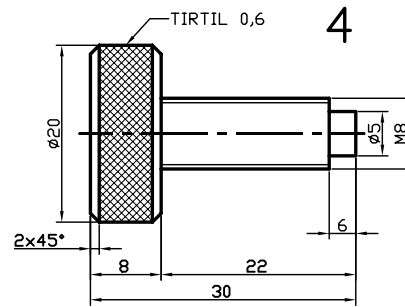
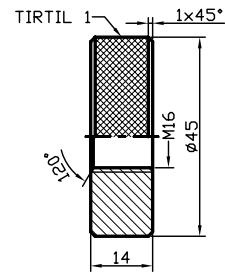
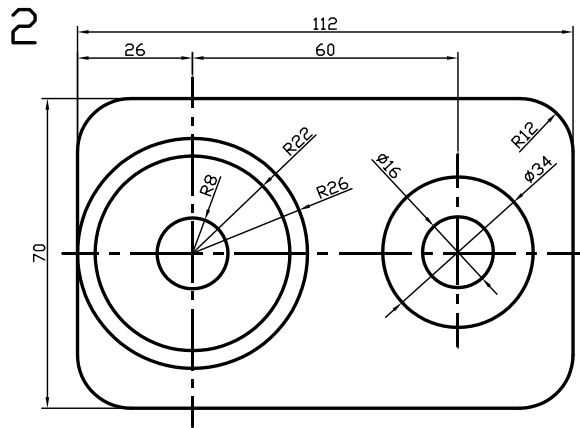
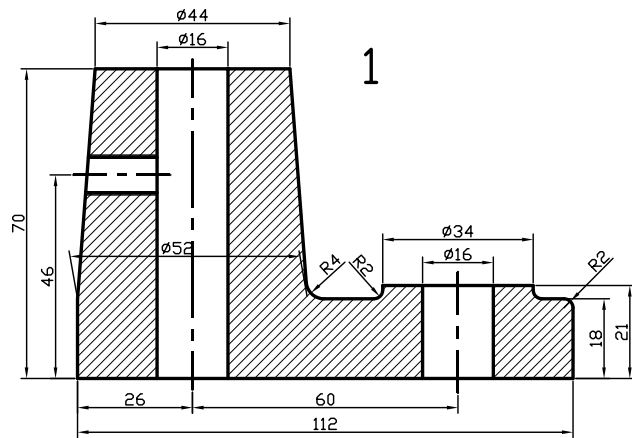




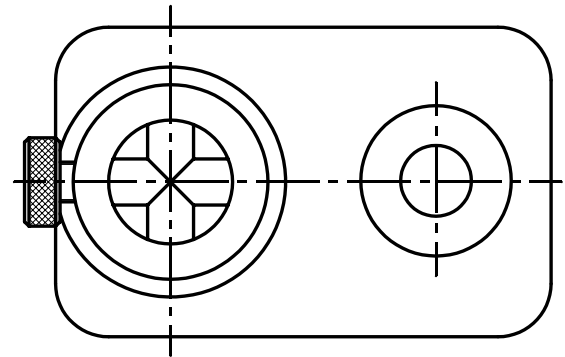
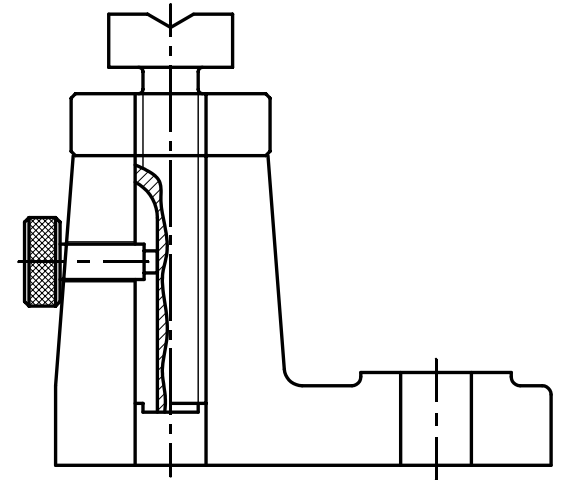
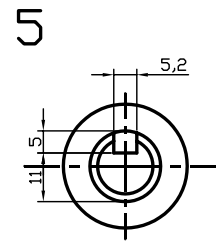
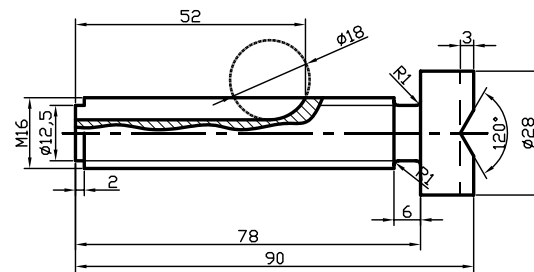
Tüm yuvarlatma yarıçapı değerleri 3 mm olacaktır.



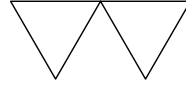




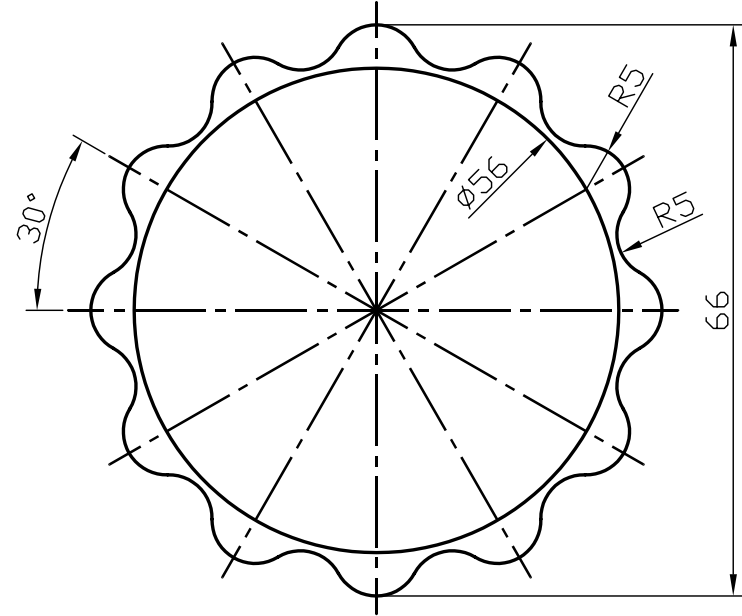
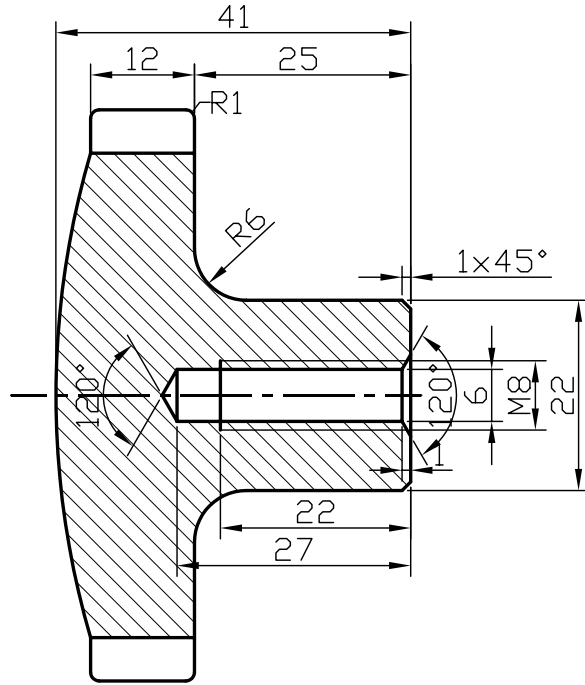
ÖLÇEK 2:1



20



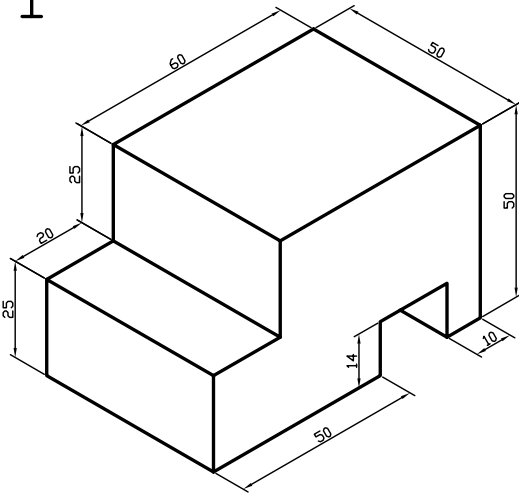
21



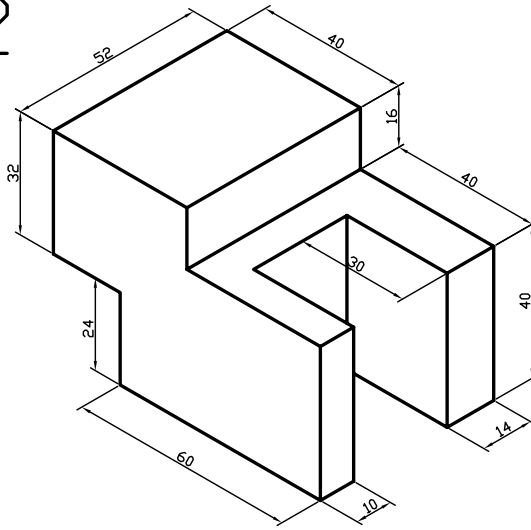
Not: Yapımdan sonra nikel kaplanır.

Ms 58	1:1	1	SIKMA KOLU	Abdullah KURT	189-09
Malzeme	Ölçek	Sayı	Parça Adı	Çizen	Resim No.

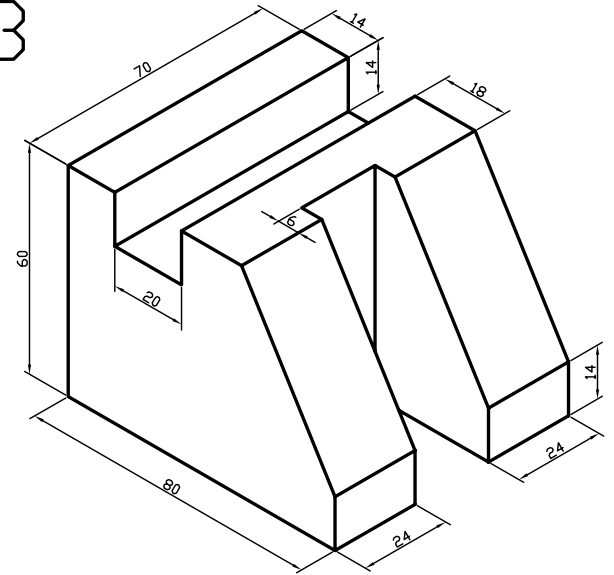
1



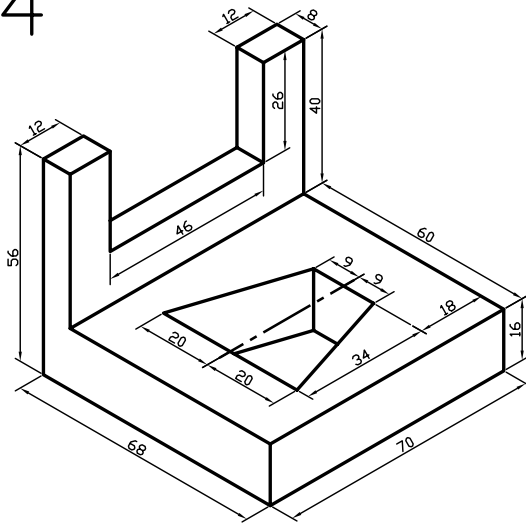
2



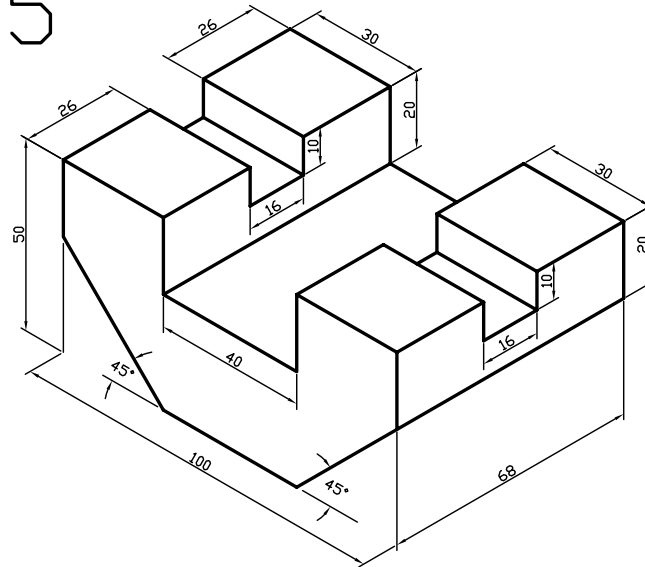
3



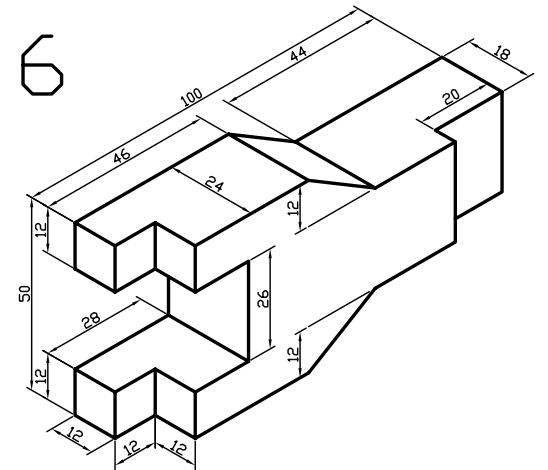
4

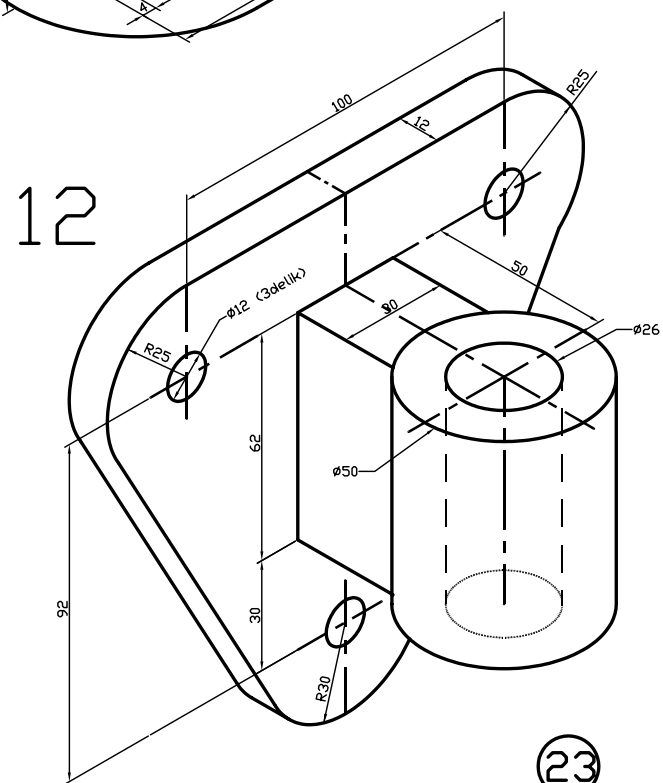
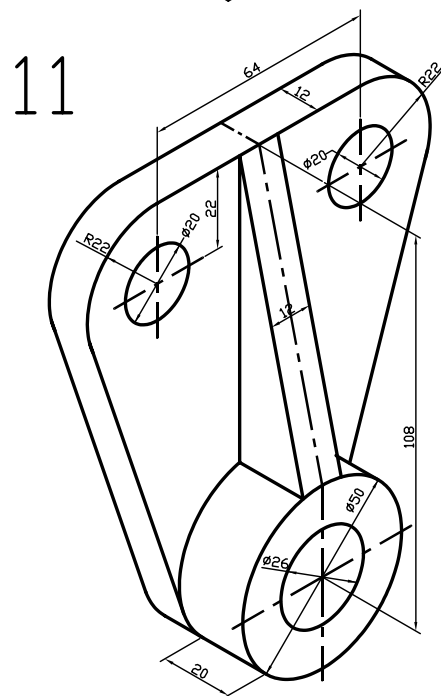
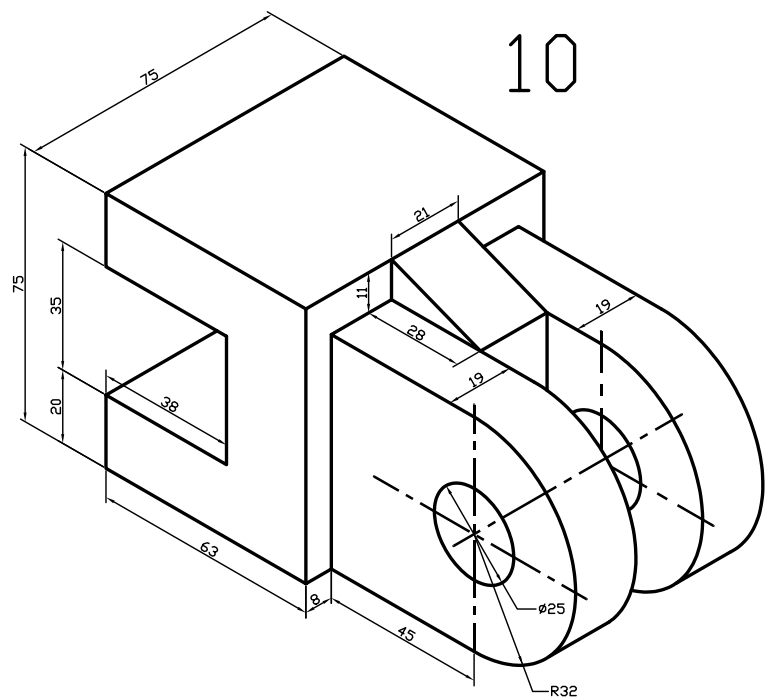
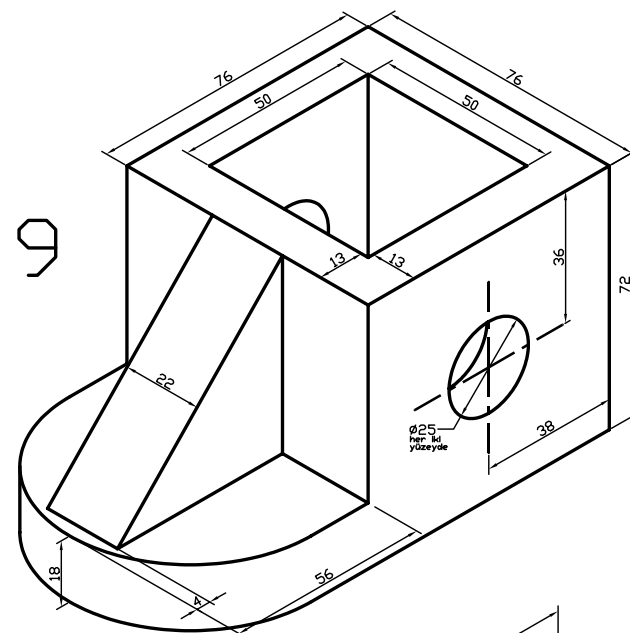
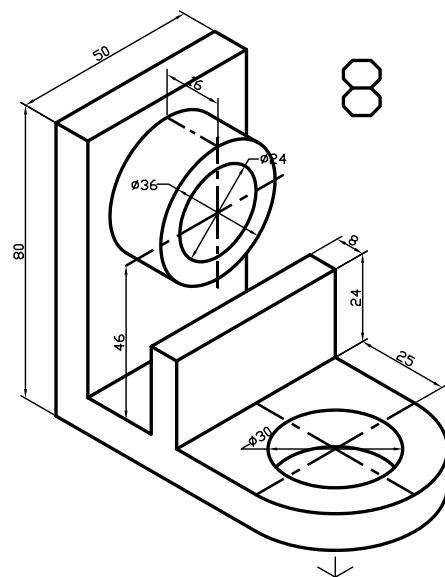
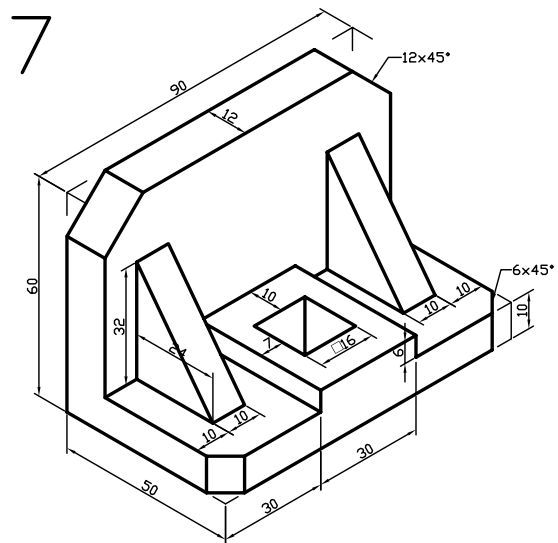


5

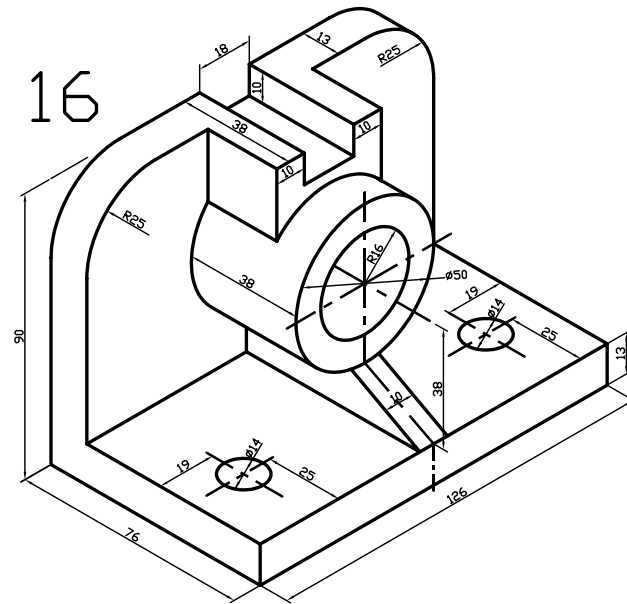
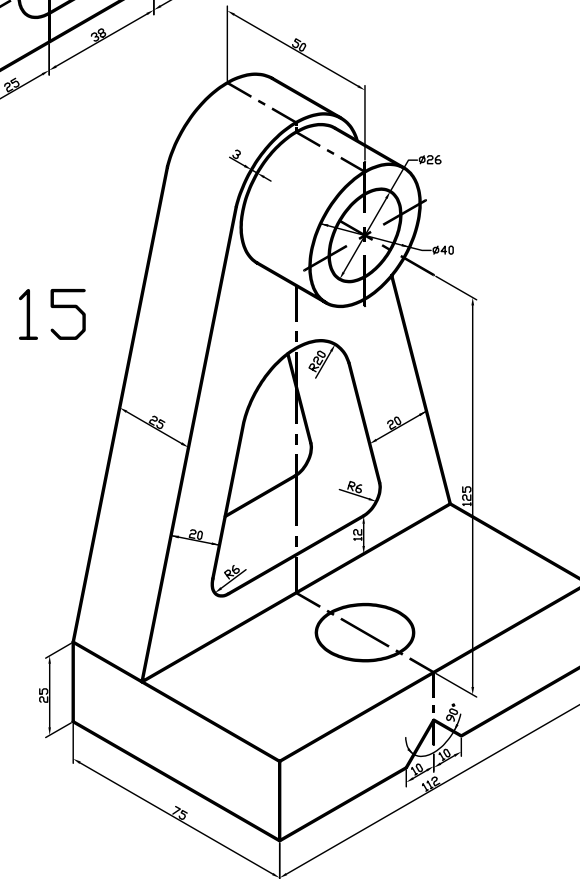
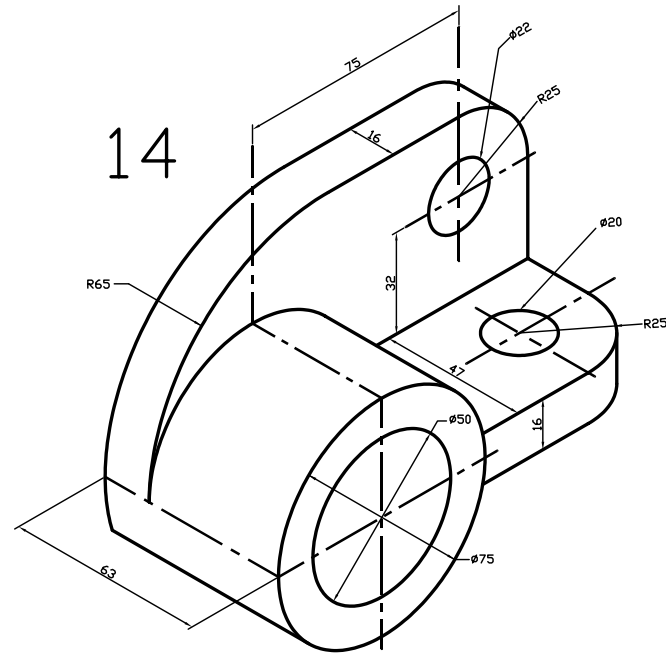
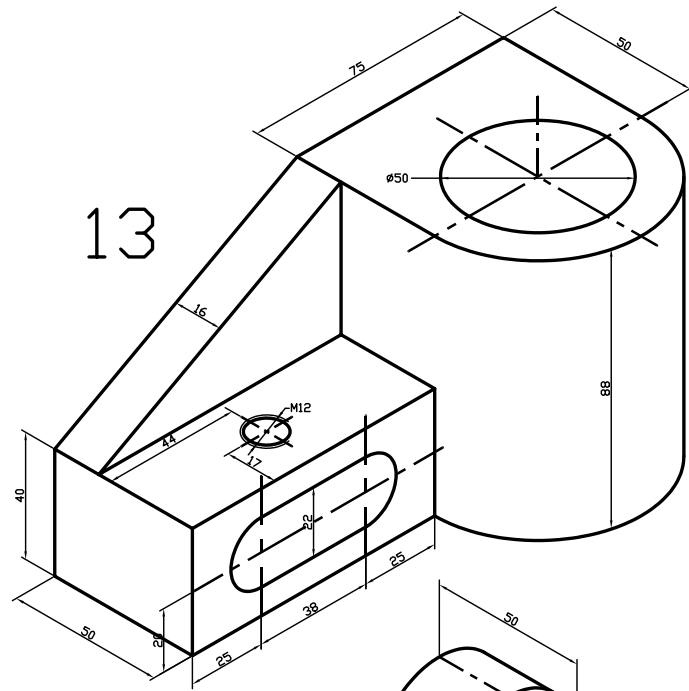


6



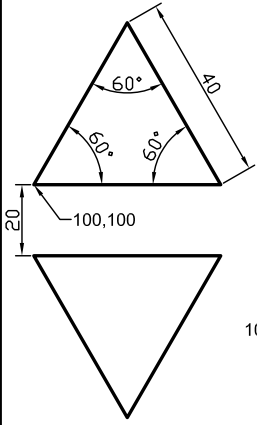




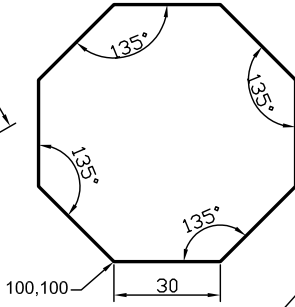




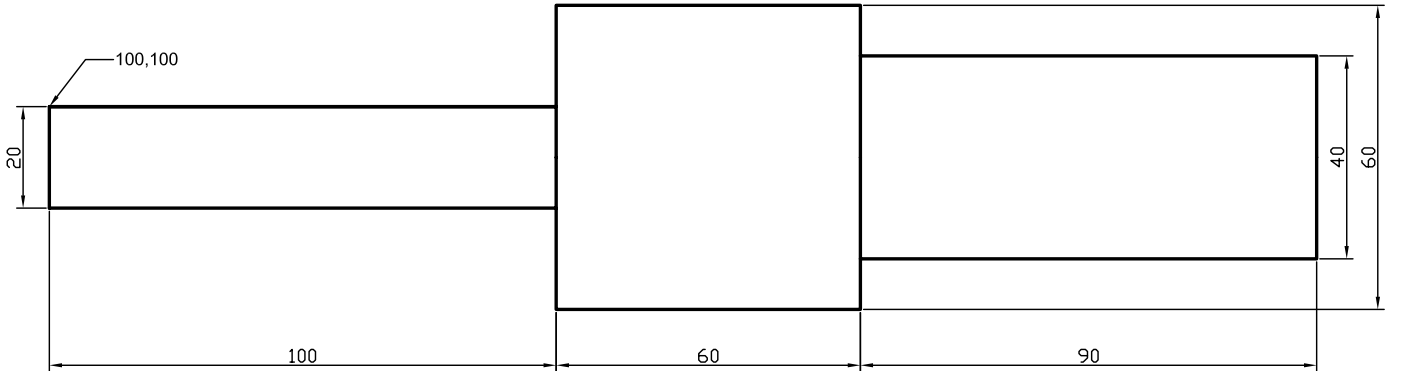
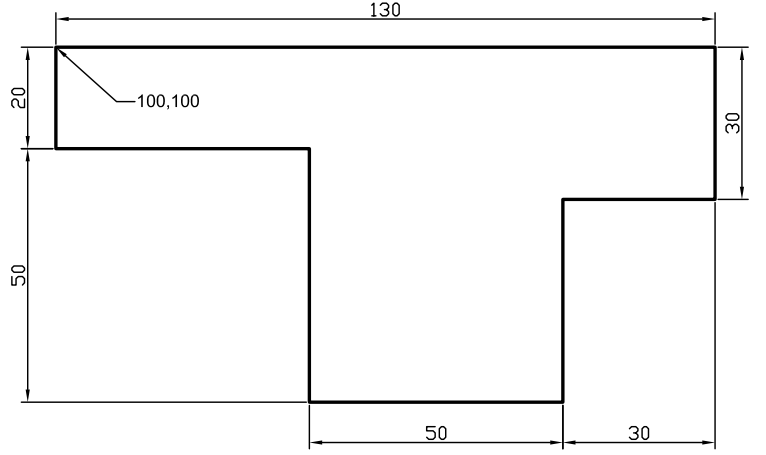
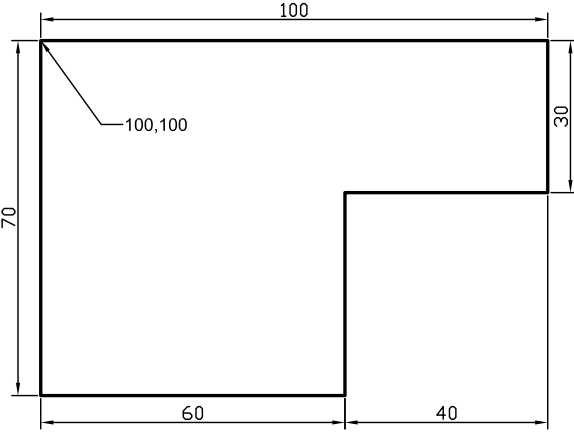
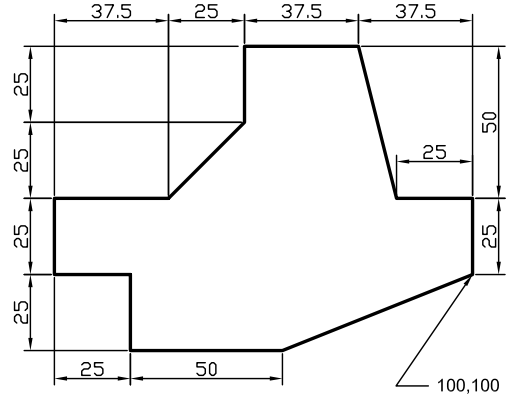
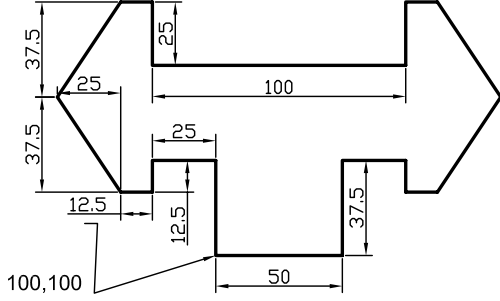
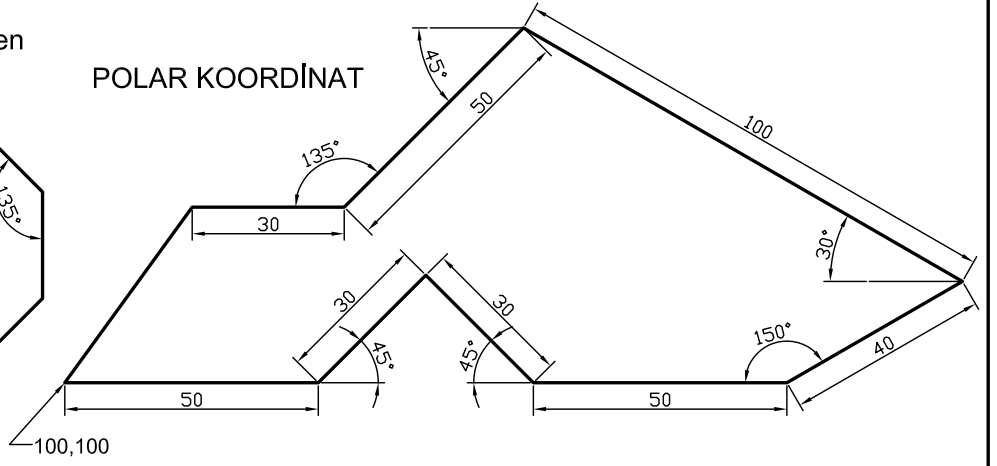
Eşkenar üçgen

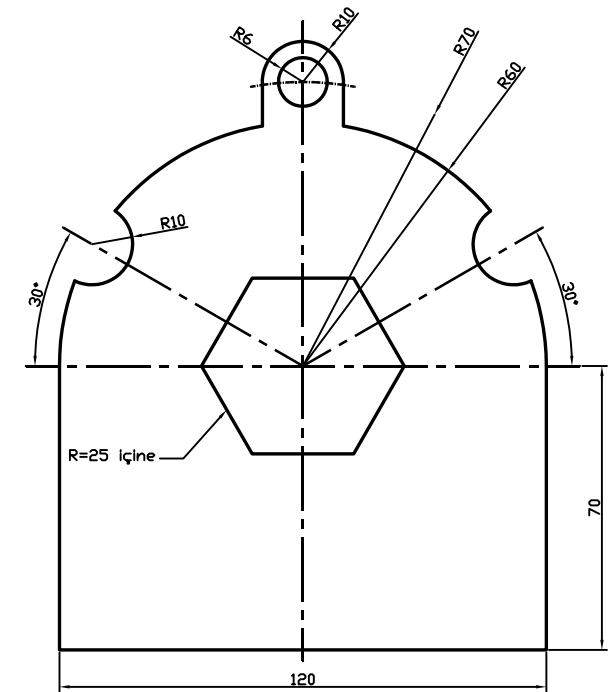
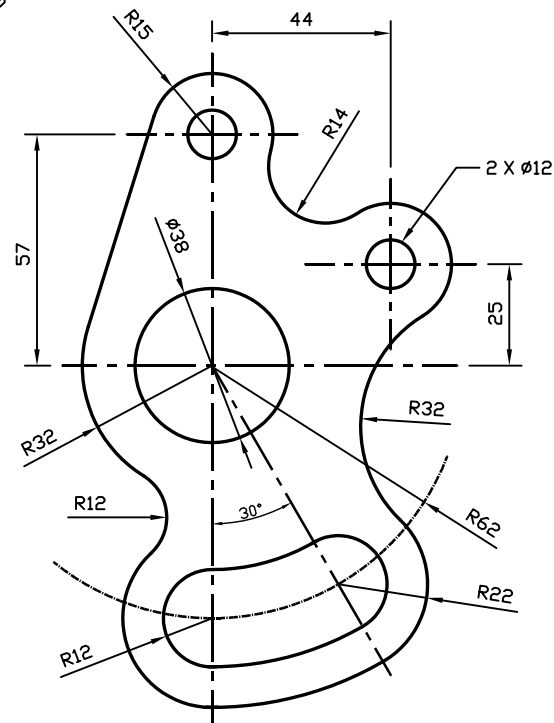
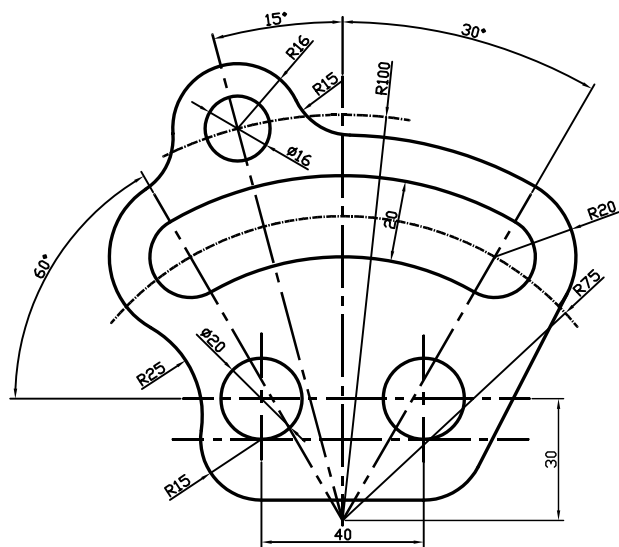
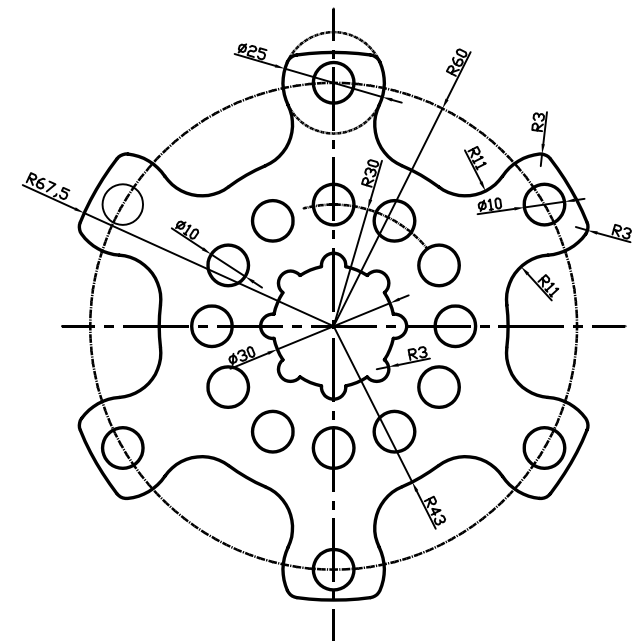
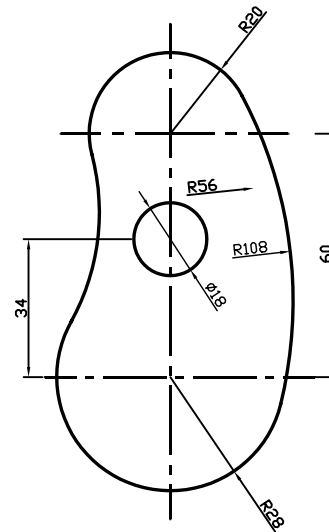
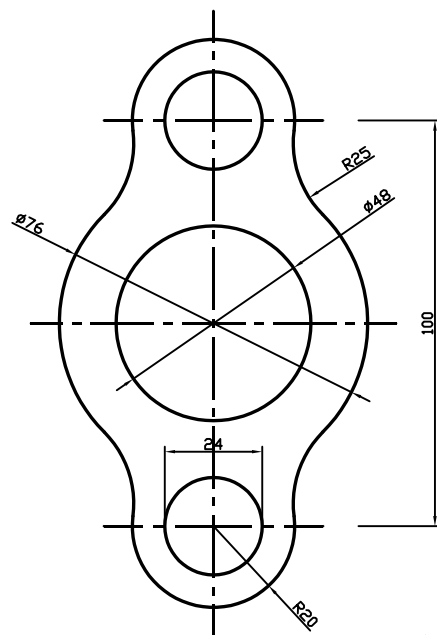
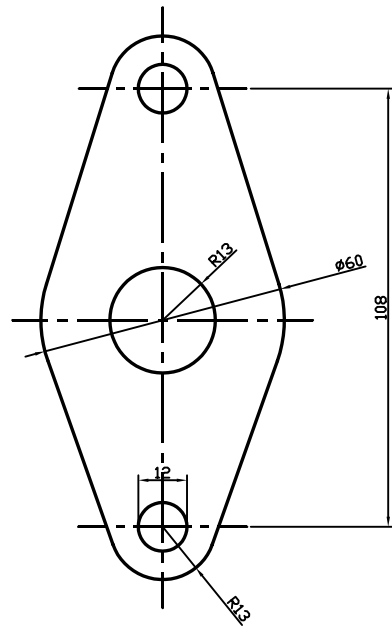


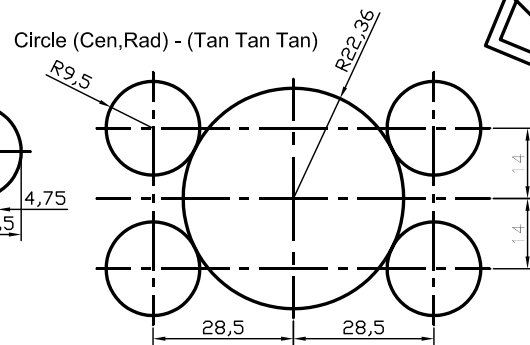
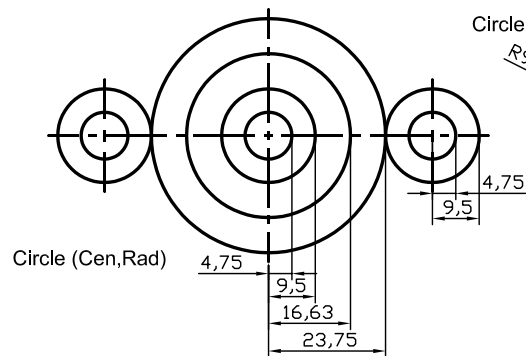
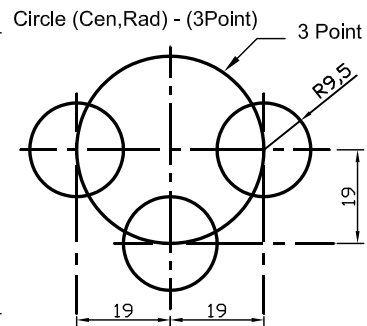
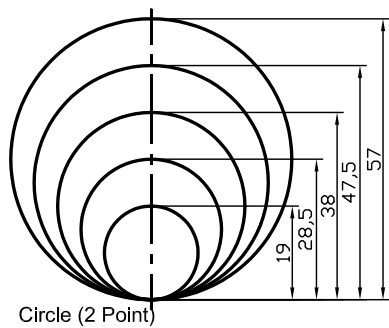
Düzgün Sekizgen



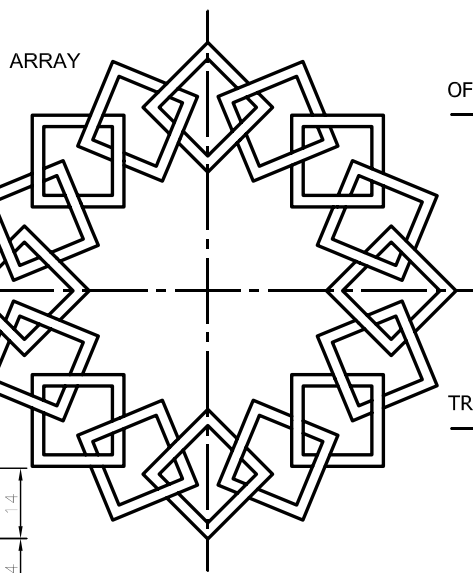
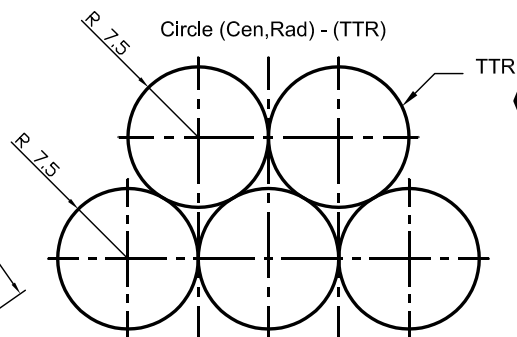
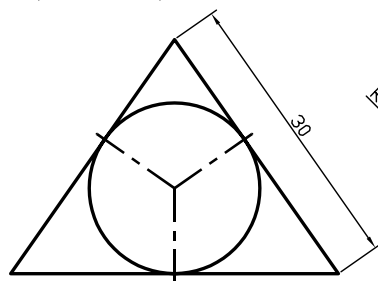
POLAR KOORDİNAT



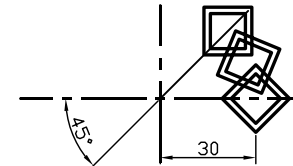
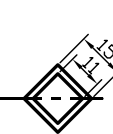




Line - Circle (Tan Tan Tan)

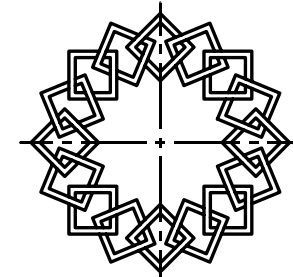


OFFSET



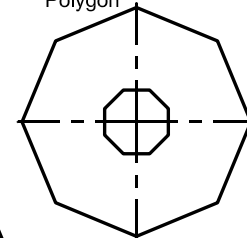
POLAR ARRAY (45° ETRAFINDA 3 TANE)

TRIM

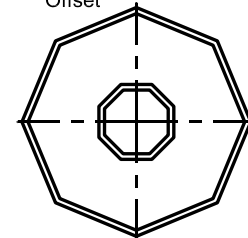


POLAR ARRAY (360° ETRAFINDA 16 TANE)

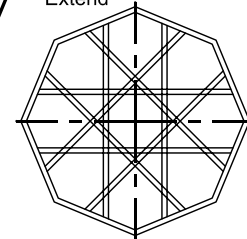
Polygon



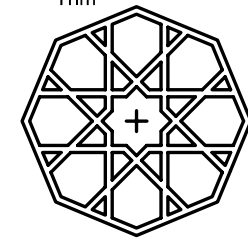
Offset

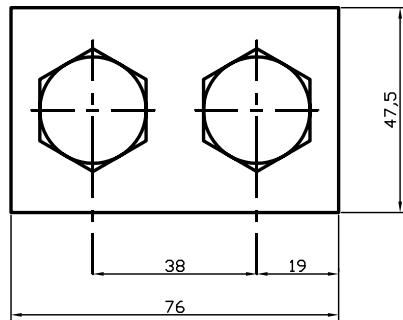


Extend



Trim

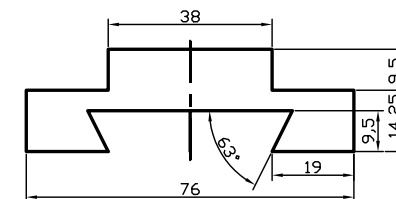
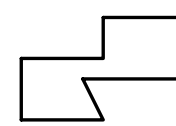
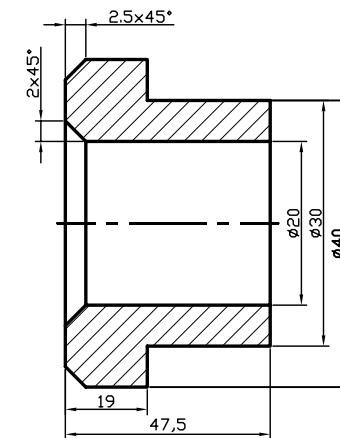
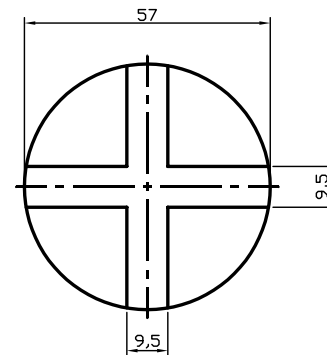
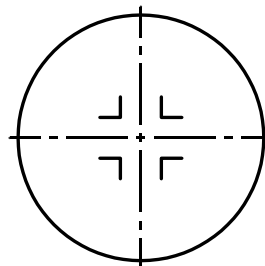
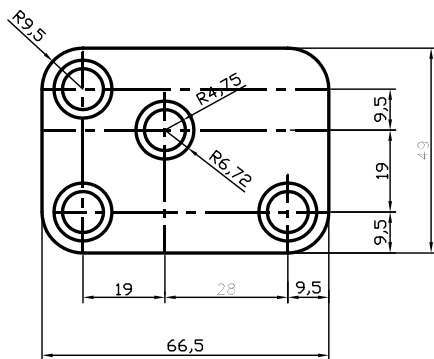
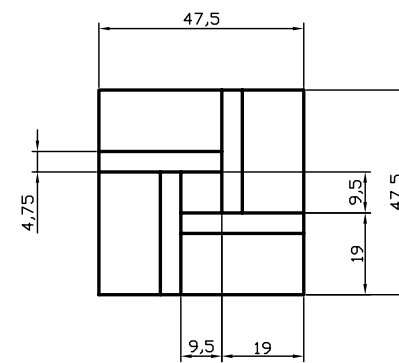
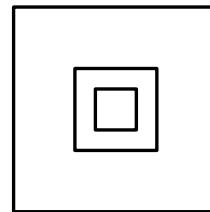
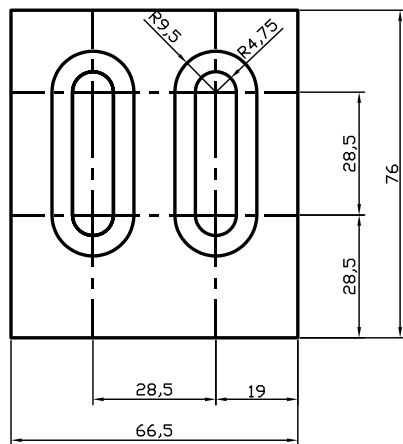




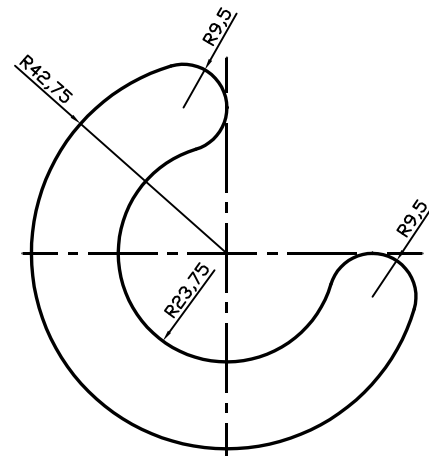
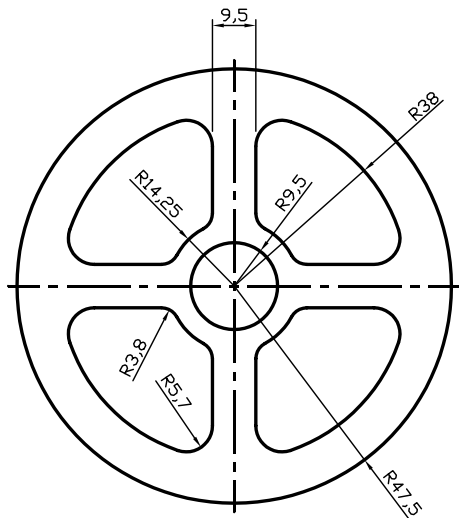
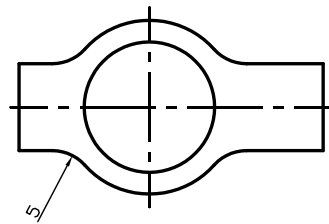
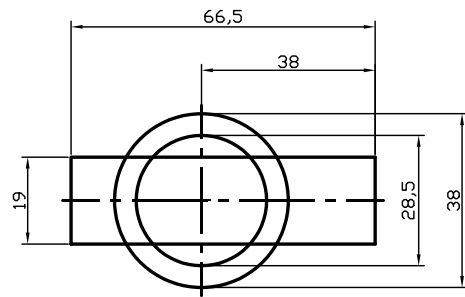
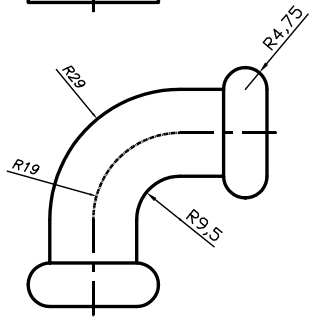
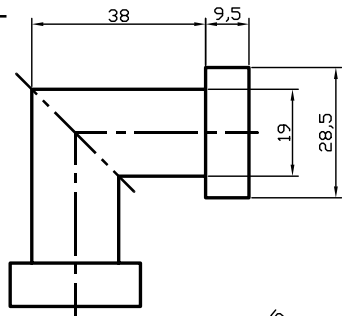
Technical drawing of a mechanical part showing front and top views with dimensions.

**Front View (Left):** A circle with a diameter dimension of 57.

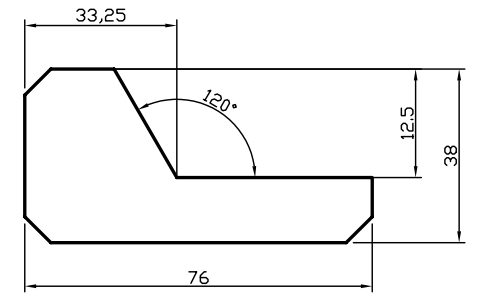
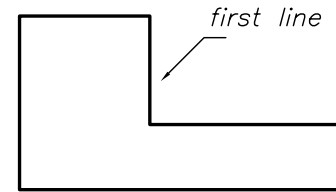
**Top View (Right):** A rectangle with a width dimension of 38 and a height dimension of 9.5.



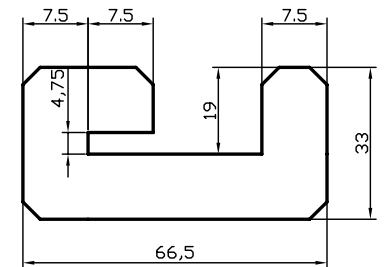
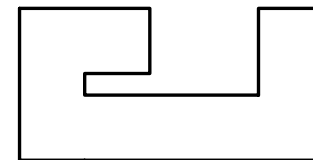
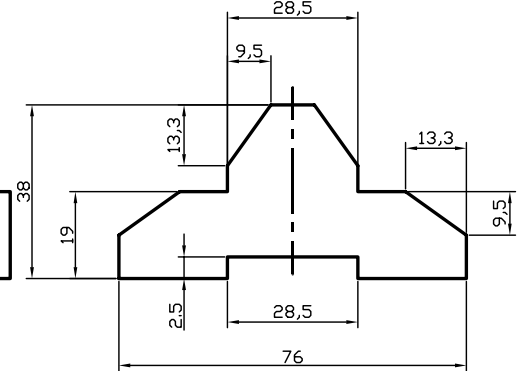
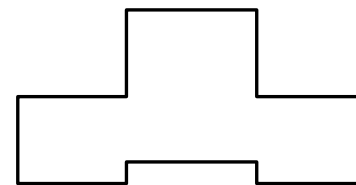
## FILLET



## CHAMFER



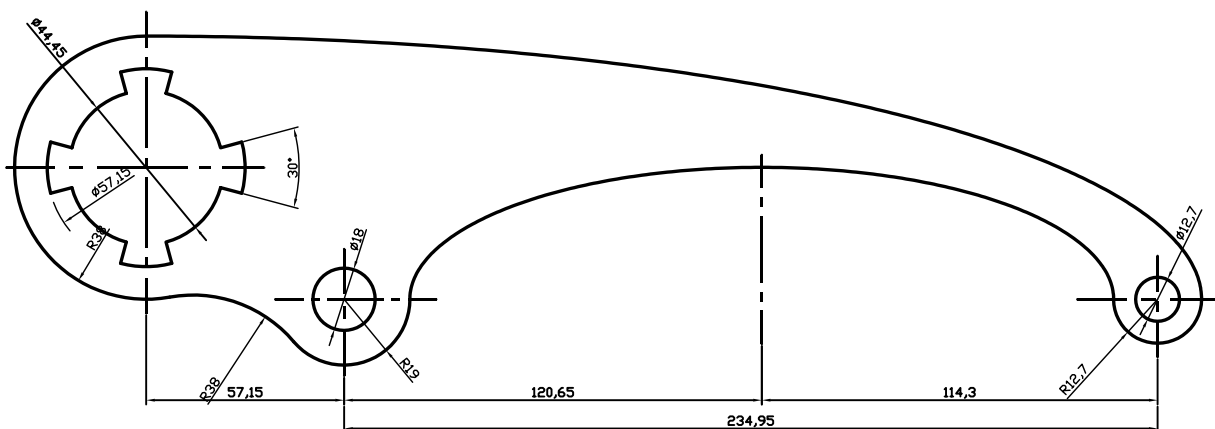
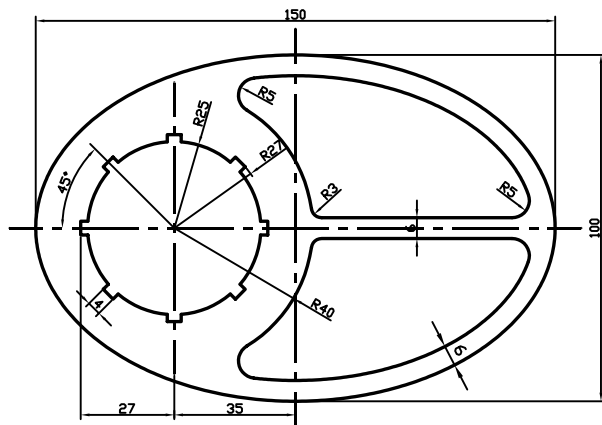
Bütün pah ölçüleri 3x3



Bütün pah ölçüleri 2x2

The figure consists of two orthographic projections of a mechanical component.

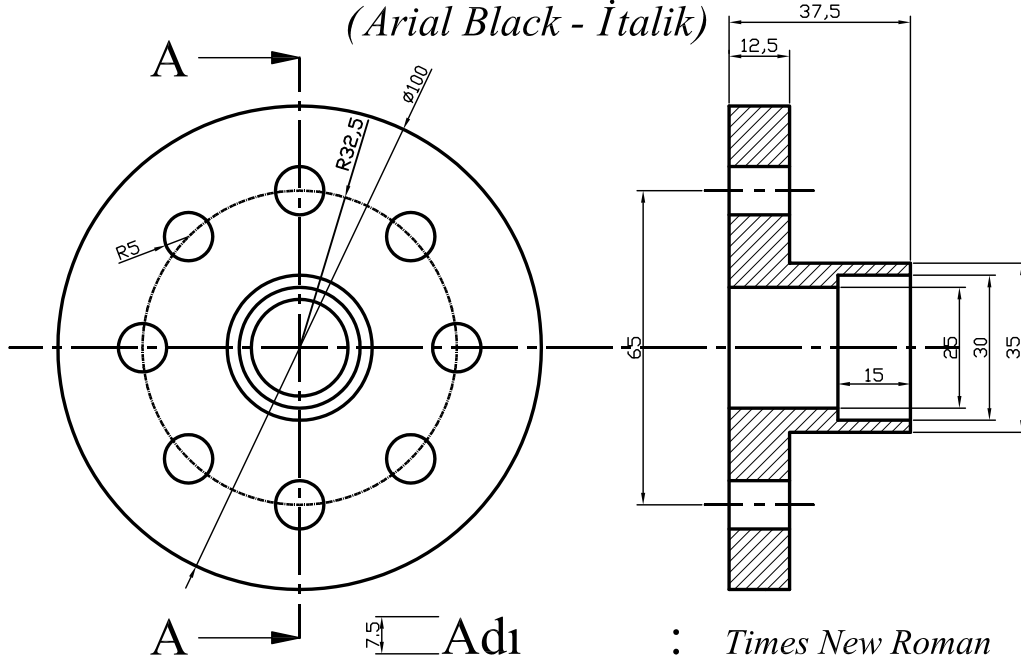
- Top View (Plan View):** Shows a square base with a total width of 80 units (20 + 40 + 20) and a total depth of 70 units (10 + 30 + 30). The outer corners are rounded with a radius of  $R25$ . Internal features include a central rectangular slot with a width of 40 units and a semi-circular cutout at the top center with a radius of  $R3$ . There are also smaller semi-circular features with a radius of  $R5$ .
- Bottom View (Side Elevation):** Shows the profile of the part from below. It has a total height of 40 units. The profile matches the top view's shape, showing the rounded corners and the internal slot.





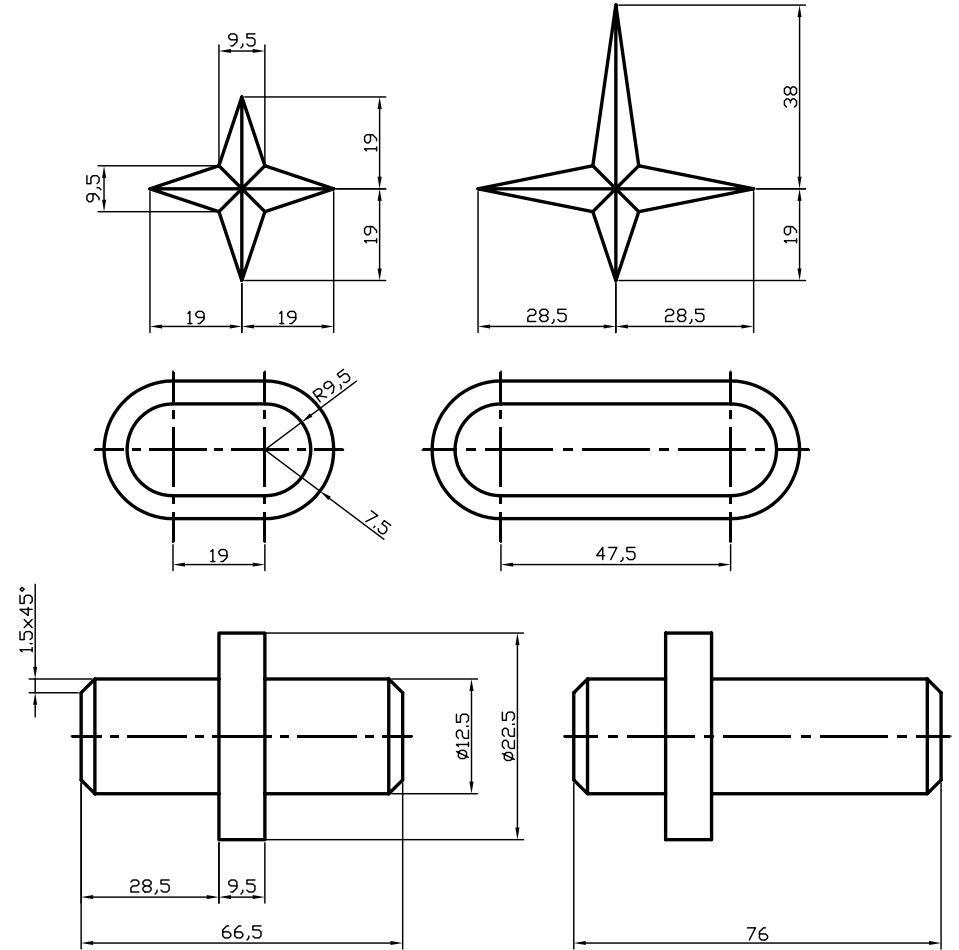
**GAZİ ÜNİVERSİTESİ BELTEK  
AUTO-CAD KURSU**

(Arial Black - İtalik)

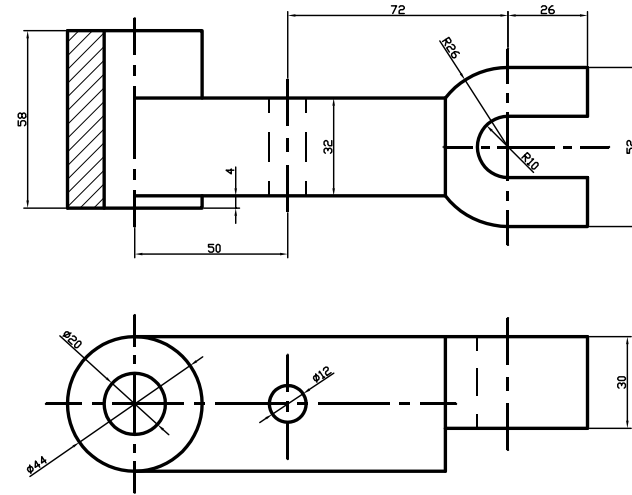
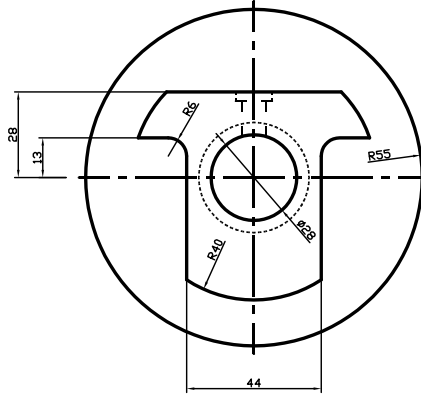


Adı : Times New Roman  
Soyadı :  
Okul No :

STRETCH

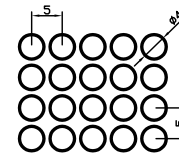
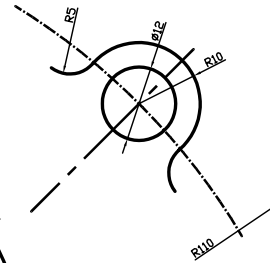
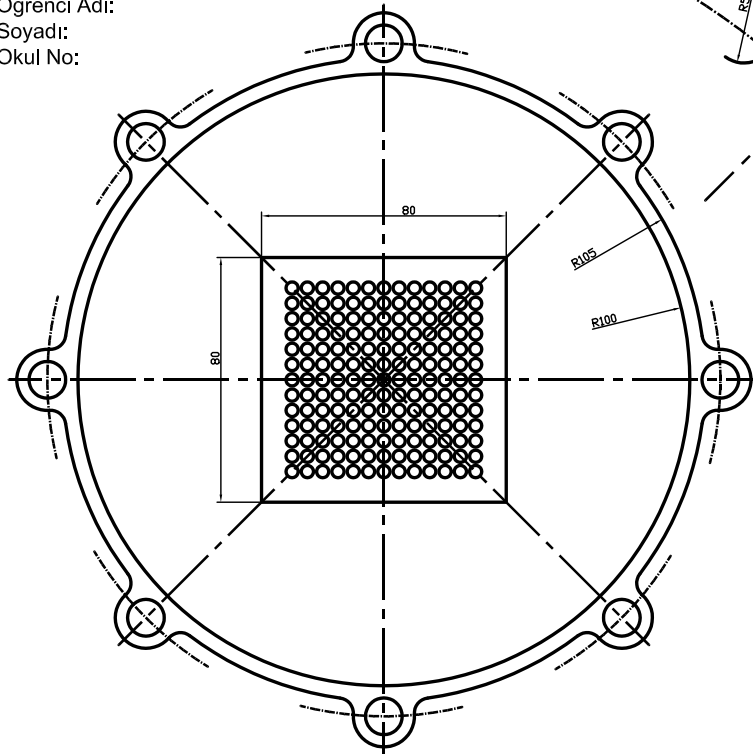


3



10

5



### Kutu Çoğaltma Detayı

